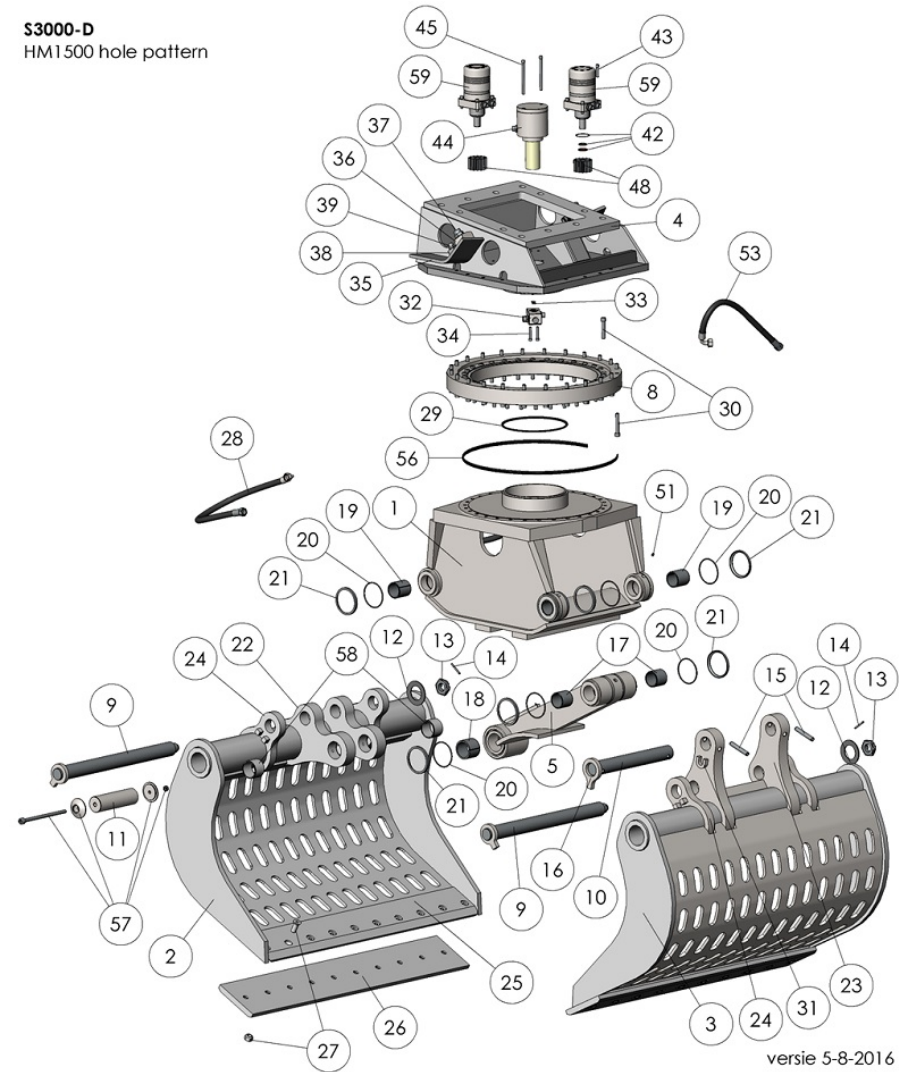
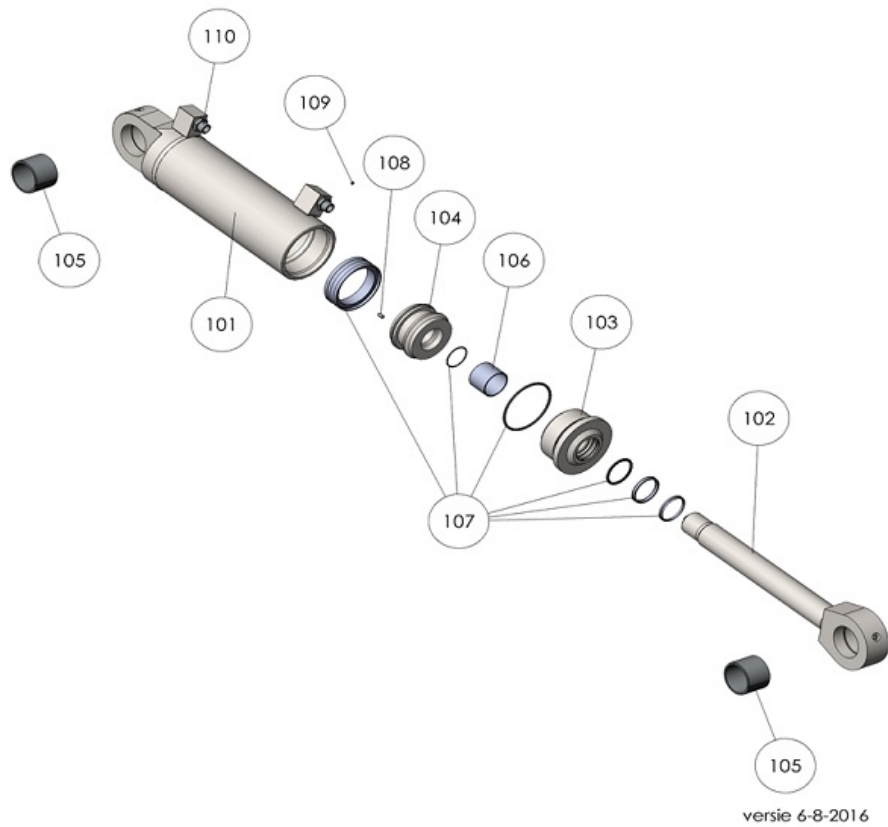


| S3000-D demolition and sorting grab |          |       |  |
|-------------------------------------|----------|-------|--|
| order No.                           | position | qty   | description  |
| S3000D.001                          | 001      | 1     | Welded main frame construction S3000-D                             |
| S3000D.002                          | 002      | 1     | Shell left (Short lever) S3000-D                                   |
| S3000D.003                          | 003      | 1     | Shell right (Long lever) S3000-D                                   |
| S3000D.004                          | 004      | 1     | Welded rotator frame construction S3000-D                          |
| S3000D.005                          | 005      | 1     | Welded linkage construction S3000-D                                |
| S3000D.006                          | 006      | 1     | Hydraulic cylinder right (4 connecting ports) S3000-D              |
| S3000D.007                          | 007      | 1     | hydraulic cylinder left (2 connecting ports) S3000-D               |
| S3000D.008                          | 008      | 1     | Slewing ring S3000-D   |
| S3000D.009                          | 009      | 2     | Main hinge pin Ø70mm S3000-D                                       |
| S3000D.010                          | 010      | 1     | Linkage axis Ø70mm (top / long) S3000-D                            |
| S3000D.011                          | 011      | 1     | Linkage axis Ø80mm (under / short) S3000-D                         |
| S3000D.012                          | 012      | 2     | Disk spring S3000-D  |
| S3000D.013                          | 013      | 2     | Castellated nut M48 S3000-D  |
| S3000D.014                          | 014      | 2     | Spline pin 8mm x 70 (secure on M48) S3000-D                        |
| S3000D.015                          | 015      | 2     | Spline pin 20mm S3000-D  |
| S3000D.016                          | 016      | 1     | Lock plate Ø70mm S3000-D   |
| S3000D.017                          | 017      | 2     | Bearings linkage top S3000-D                                       |
| S3000D.018                          | 018      | 2     | Bearings linkage under S3000-D                                     |
| S3000D.019                          | 019      | 4     | Bearings main frame S3000-D  |
| S3000D.020                          | 020      | 12    | O-ring Metal Seal (Ø137mm) S3000-D                                 |
| S3000D.021                          | 021      | 12    | Metal Seal (Ø137mm) S3000-D  |
| S3000D.022                          | 022      | 2     | Shell hinge Short S3000-D  |
| S3000D.023                          | 023      | 2     | Shell hinge long S3000-D   |
| S3000D.024                          | 024      | 4     | Shell hinge support S3000-D  |
| S3000D.025                          | 025      | 2     | Fixed blade S3000-D  |
| S3000D.026                          | 026      | 1 set | Exchangeable wear blades (2 pcs) S3000-D                           |
| S3000D.027                          | 027      | 1 set | Bolt set exchangeable wear blades (2 pcs) S3000-D                  |
| S3000D.028                          | 028      | 1 set | Hose kit main frame (4 pcs) S3000-D                                |
| S3000D.029                          | 029      | 1     | V-ring (central ring) S3000-D                                      |
| S3000D.030                          | 030      | 1 set | Bolt set slewing ring S3000-D                                      |
| S3000D.031                          | 031      | 1     | Locker-u S3000-D   |
| S3000D.032                          | 032      | 1     | Connector block C.O.D. Ø70 S3000-D                                 |
| S3000D.033                          | 033      | 1 set | O-ring to C.O.D. (2 pcs) S3000-D                                   |
| S3000D.034                          | 034      | 1 set | Bolt set connector block C.O.D. (2 pcs) S3000-D                    |
| S3000D.035                          | 035      | 2     | Protective cover (connection nippels) S3000-D                      |
| S3000D.036                          | 036      | 2     | Main connect block (closing/open function) 1" G S3000-D            |
| S3000D.037                          | 037      | 2     | Main connect nipple (closing/open function) S3000-D                |
| S3000D.038                          | 038      | 2     | Main connect block (rotation function) 3/4" G S3000-D              |
| S3000D.039                          | 039      | 2     | Main connect nipple (rotation function) S3000-D                    |
| S3000D.042                          | 042      | 1 set | Seal kit hydro motor (for 1 motor) S3000-D                         |
| S3000D.043                          | 043      | 1 set | Bolt set hydro motor (for 2 motors) S3000-D                        |
| S3000D.044                          | 044      | 1     | C.O.D. complete S3000-D  |
| S3000D.045                          | 045      | 1 set | Bolt set C.O.D. S3000-D  |
| S3000D.048                          | 048      | 2     | Gear S3000-D   |
| S3000D.051                          | 051      | 1 set | Lubrication nipple 1/8" G (12 pieces) S3000-D                      |
| S3000D.053                          | 053      | 1 set | Hose kit rotating frame (6 pcs) S3000-D                            |
| S3000D.056                          | 056      | 1     | Slewing ring seal S3000-D  |
| S3000D.057                          | 057      | 1 set | Locker set linkage axis (under/short) S3000-D                      |
| S3000D.058                          | 058      | 2     | Bearings linkage axis (under/short) S3000-D                        |
| S3000D.059                          | 059      | 2     | Hydro motor square flange S3000-D                                  |
| S3000D.PBS                          | PBS      | 1 set | Maintenance kit pivot points (incl. all axes, bushes etc.) S3000-D |

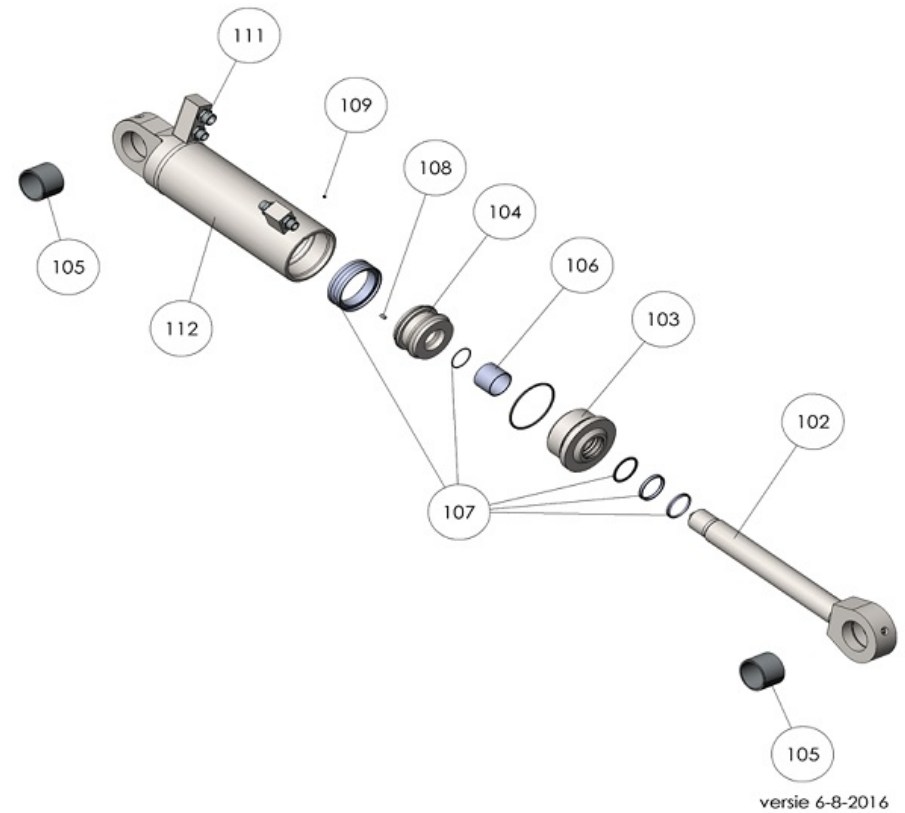
S3000-D  
HM1500 hole pattern



| S3000-D cylinder left |          |       |   |
|-----------------------|----------|-------|---|
| order No.             | position | qty   | description   |
| S3000D.101            | 101      | 1     | Cylinder housing (low connection / 2 ports) S3000-D |
| S3000D.102            | 102      | 1     | Piston rod S3000-D                                  |
| S3000D.103            | 103      | 1     | Cylinder nut S3000-D                                |
| S3000D.104            | 104      | 1     | Piston S3000-D                                      |
| S3000D.105            | 105      | 2     | Bearing cylinder housing S3000-D                    |
| S3000D.106            | 106      | 1     | Bearing cylinder nut S3000-D                        |
| S3000D.107            | 107      | 1 set | Cylinder seal kit S3000-D                           |
| S3000D.108            | 108      | 1     | Secure bolt M8 x12 S3000-D                          |
| S3000D.109            | 109      | 1     | Secure bolt M6 x 6 S3000-D                          |
| S3000D.110            | 110      | 1 set | Cylinder nipple set (2 pcs) S3000-D                 |



| S3000-D cylinder right |          |       |  |
|------------------------|----------|-------|--|
| order No.              | position | qty   | description  |
| S3000D.112             | 112      | 1     | Cylinder housing (high connection / 4 ports) S3000-D |
| S3000D.102             | 102      | 1     | Piston rod S3000-D                                   |
| S3000D.103             | 103      | 1     | Cylinder nut S3000-D                                 |
| S3000D.104             | 104      | 1     | Piston S3000-D                                       |
| S3000D.105             | 105      | 2     | Bearing cylinder housing S3000-D                     |
| S3000D.106             | 106      | 1     | Bearing cylinder nut S3000-D                         |
| S3000D.107             | 107      | 1 set | Cylinder seal kit S3000-D                            |
| S3000D.108             | 108      | 1     | Secure bolt M8 x12 S3000-D                           |
| S3000D.109             | 109      | 1     | Secure bolt M6 x 6 S3000-D                           |
| S3000D.111             | 111      | 1 set | Cylinder nipple set (4 pcs) S3000-D                  |



| S3000-D central oil distributor (C.O.D.) |          |       |  |
|--|----------|-------|--|
| order No.                                | position | qty   | description  |
| S3000D.201                               | 201      | 1     | C.O.D. housing S3000-D                                     |
| S3000D.202                               | 202      | 1     | C.O.D. rotor Ø70mm S3000-D                                 |
| S3000D.203                               | 203      | 1     | C.O.D. cover S3000-D                                       |
| S3000D.204                               | 204      | 1     | C.O.D. connection block S3000-D                            |
| S3000D.205                               | 205      | 1     | Bearing S3000-D  |
| S3000D.206                               | 206      | 1     | Seeger circlip ring S3000-D                                |
| S3000D.207                               | 207      | 1 set | Bolt set C.O.D. connection block (2 pcs) S3000-D           |
| S3000D.208                               | 208      | 1 set | Rotor seal kit C.O.D. S3000-D                              |
| S3000D.209                               | 209      | 1 set | Connection nipples C.O.D. housing (2 pcs) S3000-D          |
| S3000D.210                               | 210      | 1 set | Connection nipples C.O.D. connection block (2 pcs) S3000-D |

