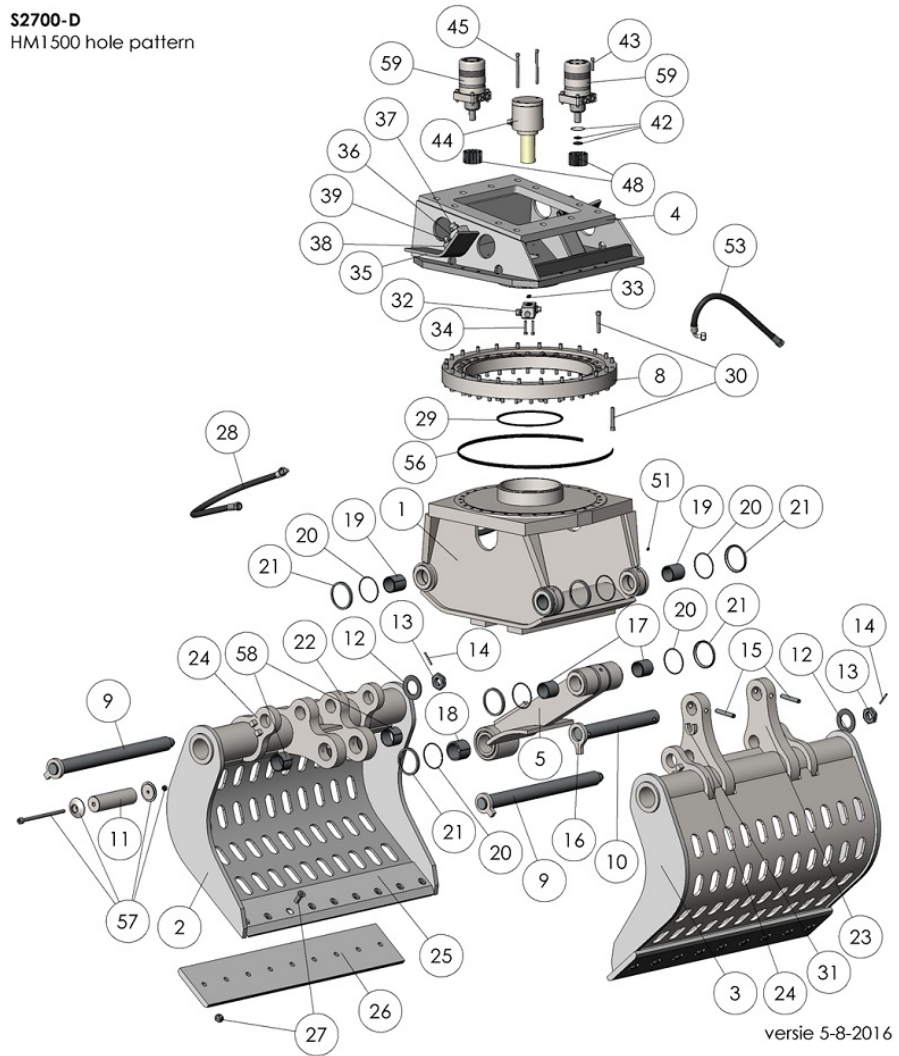
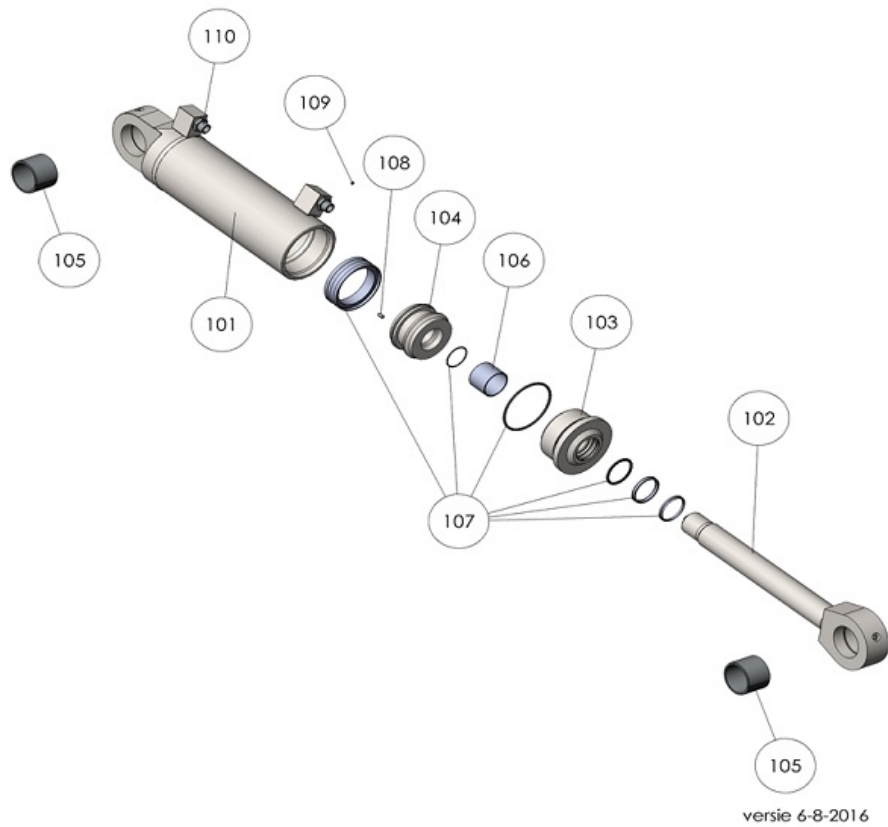


S2700-D demolition and sorting grab			
order No.	position	qty	description
S2700D.001	001	1	Welded main frame construction S2700-D
S2700D.002	002	1	Shell left (Short lever) S2700-D
S2700D.003	003	1	Shell right (Long lever) S2700-D
S2700D.004	004	1	Welded rotator frame construction S2700-D
S2700D.005	005	1	Welded linkage construction S2700-D
S2700D.006	006	1	Hydraulic cylinder right (4 connecting ports) S2700-D
S2700D.007	007	1	hydraulic cylinder left (2 connecting ports) S2700-D
S2700D.008	008	1	Slewing ring S2700-D
S2700D.009	009	2	Main hinge pin Ø70mm S2700-D
S2700D.010	010	1	Linkage axis Ø70mm (top / long) S2700-D
S2700D.011	011	1	Linkage axis Ø80mm (under / short) S2700-D
S2700D.012	012	2	Disk spring S2700-D
S2700D.013	013	2	Castellated nut M48 S2700-D
S2700D.014	014	2	Spline pin 8mm x 70 (secure on M48) S2700-D
S2700D.015	015	2	Spline pin 20mm S2700-D
S2700D.016	016	1	Lock plate Ø70mm S2700-D
S2700D.017	017	2	Bearings linkage top S2700-D
S2700D.018	018	2	Bearings linkage under S2700-D
S2700D.019	019	4	Bearings main frame S2700-D
S2700D.020	020	12	O-ring Metal Seal (Ø137mm) S2700-D
S2700D.021	021	12	Metal Seal (Ø137mm) S2700-D
S2700D.022	022	2	Shell hinge Short S2700-D
S2700D.023	023	2	Shell hinge long S2700-D
S2700D.024	024	4	Shell hinge support S2700-D
S2700D.025	025	2	Fixed blade S2700-D
S2700D.026	026	1 set	Exchangeable wear blades (2 pcs) S2700-D
S2700D.027	027	1 set	Bolt set exchangeable wear blades (2 pcs) S2700-D
S2700D.028	028	1 set	Hose kit main frame (4 pcs) S2700-D
S2700D.029	029	1	V-ring (central ring) S2700-D
S2700D.030	030	1 set	Bolt set slewing ring S2700-D
S2700D.031	031	1	Locker-u S2700-D
S2700D.032	032	1	Connector block C.O.D. Ø70 S2700-D
S2700D.033	033	1 set	O-ring to C.O.D. (2 pcs) S2700-D
S2700D.034	034	1 set	Bolt set connector block C.O.D. (2 pcs) S2700-D
S2700D.035	035	2	Protective cover (connection nippels) S2700-D
S2700D.036	036	2	Main connect block (closing/open function) 1" G S2700-D
S2700D.037	037	2	Main connect nipple (closing/open function) S2700-D
S2700D.038	038	2	Main connect block (rotation function) 3/4" G S2700-D
S2700D.039	039	2	Main connect nipple (rotation function) S2700-D
S2700D.042	042	1 set	Seal kit hydro motor (for 1 motor) S2700-D
S2700D.043	043	1 set	Bolt set hydro motor (for 2 motors) S2700-D
S2700D.044	044	1	C.O.D. complete S2700-D
S2700D.045	045	1 set	Bolt set C.O.D. S2700-D
S2700D.048	048	2	Gear S2700-D
S2700D.051	051	1 set	Lubrication nipple 1/8" G (12 pieces) S2700-D
S2700D.053	053	1 set	Hose kit rotating frame (6 pcs) S2700-D
S2700D.056	056	1	Slewing ring seal S2700-D
S2700D.057	057	1 set	Locker set linkage axis (under/short) S2700-D
S2700D.058	058	2	Bearings linkage axis (under/short) S2700-D
S2700D.059	059	2	Hydro motor square flange S2700-D
S2700D.PBS	PBS	1 set	Maintenance kit pivot points (incl. all axes, bushes etc.) S2700-D

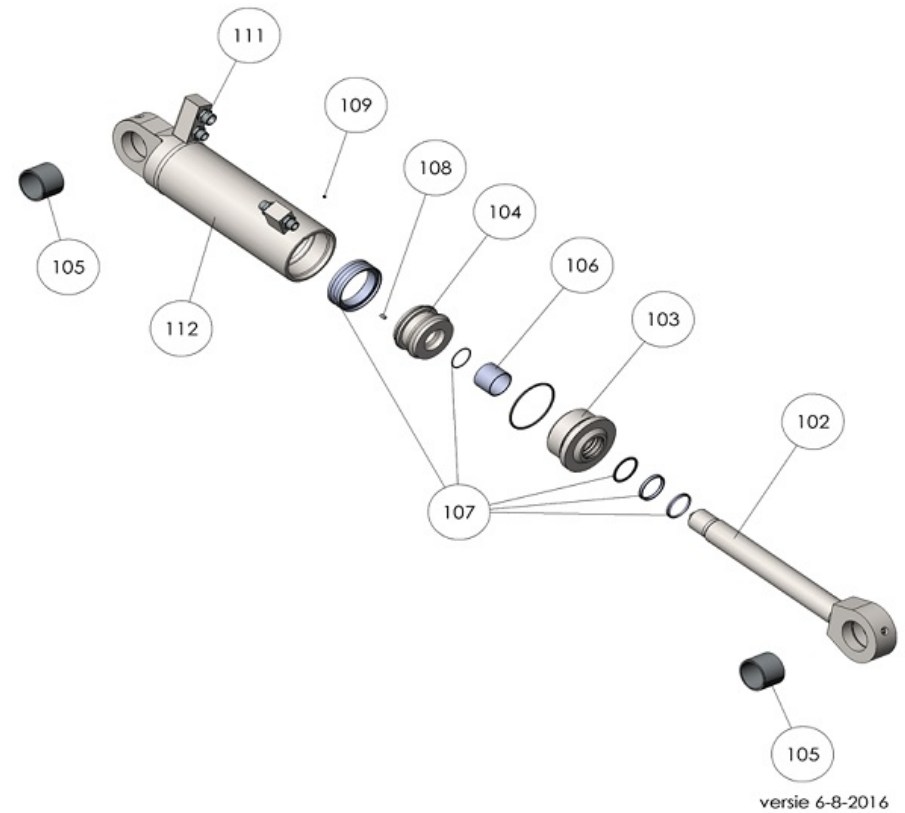
S2700-D  
HM1500 hole pattern



S2700-D cylinder left			
order No.	position	qty	description
S2700D.101	101	1	Cylinder housing (low connection / 2 ports) S2700-D
S2700D.102	102	1	Piston rod S2700-D
S2700D.103	103	1	Cylinder nut S2700-D
S2700D.104	104	1	Piston S2700-D
S2700D.105	105	2	Bearing cylinder housing S2700-D
S2700D.106	106	1	Bearing cylinder nut S2700-D
S2700D.107	107	1 set	Cylinder seal kit S2700-D
S2700D.108	108	1	Secure bolt M8 x12 S2700-D
S2700D.109	109	1	Secure bolt M6 x 6 S2700-D
S2700D.110	110	1 set	Cylinder nipple set (2 pcs) S2700-D



S2700-D cylinder right			
order No.	position	qty	description
S2700D.112	112	1	Cylinder housing (high connection / 4 ports) S2700-D
S2700D.102	102	1	Piston rod S2700-D
S2700D.103	103	1	Cylinder nut S2700-D
S2700D.104	104	1	Piston S2700-D
S2700D.105	105	2	Bearing cylinder housing S2700-D
S2700D.106	106	1	Bearing cylinder nut S2700-D
S2700D.107	107	1 set	Cylinder seal kit S2700-D
S2700D.108	108	1	Secure bolt M8 x12 S2700-D
S2700D.109	109	1	Secure bolt M6 x 6 S2700-D
S2700D.111	111	1 set	Cylinder nipple set (4 pcs) S2700-D



S2700-D central oil distributor (C.O.D.)			
order No.	position	qty	description
S2700D.201	201	1	C.O.D. housing S2700-D
S2700D.202	202	1	C.O.D. rotor Ø70mm S2700-D
S2700D.203	203	1	C.O.D. cover S2700-D
S2700D.204	204	1	C.O.D. connection block S2700-D
S2700D.205	205	1	Bearing S2700-D
S2700D.206	206	1	Seeger circlip ring S2700-D
S2700D.207	207	1 set	Bolt set C.O.D. connection block (2 pcs) S2700-D
S2700D.208	208	1 set	Rotor seal kit C.O.D. S2700-D
S2700D.209	209	1 set	Connection nipples C.O.D. housing (2 pcs) S2700-D
S2700D.210	210	1 set	Connection nipples C.O.D. connection block (2 pcs) S2700-D

