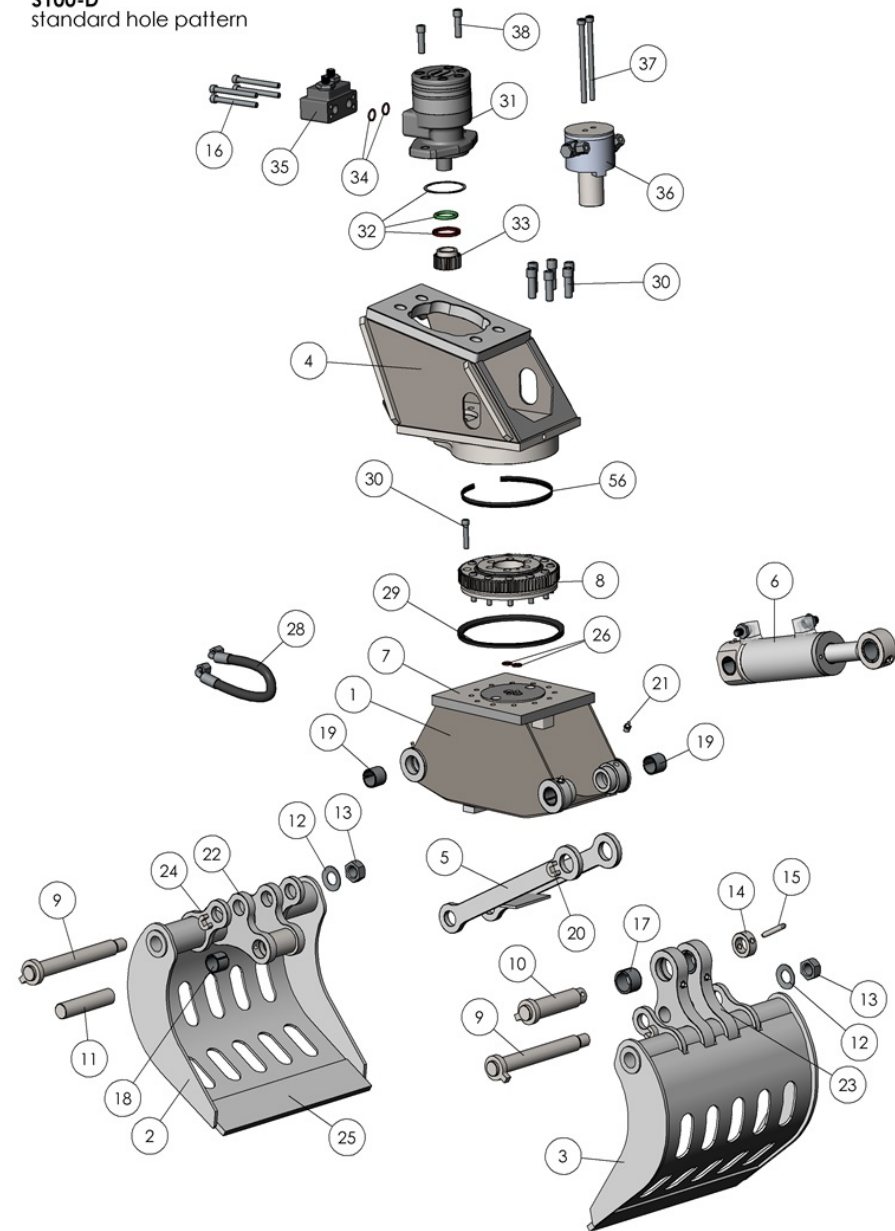
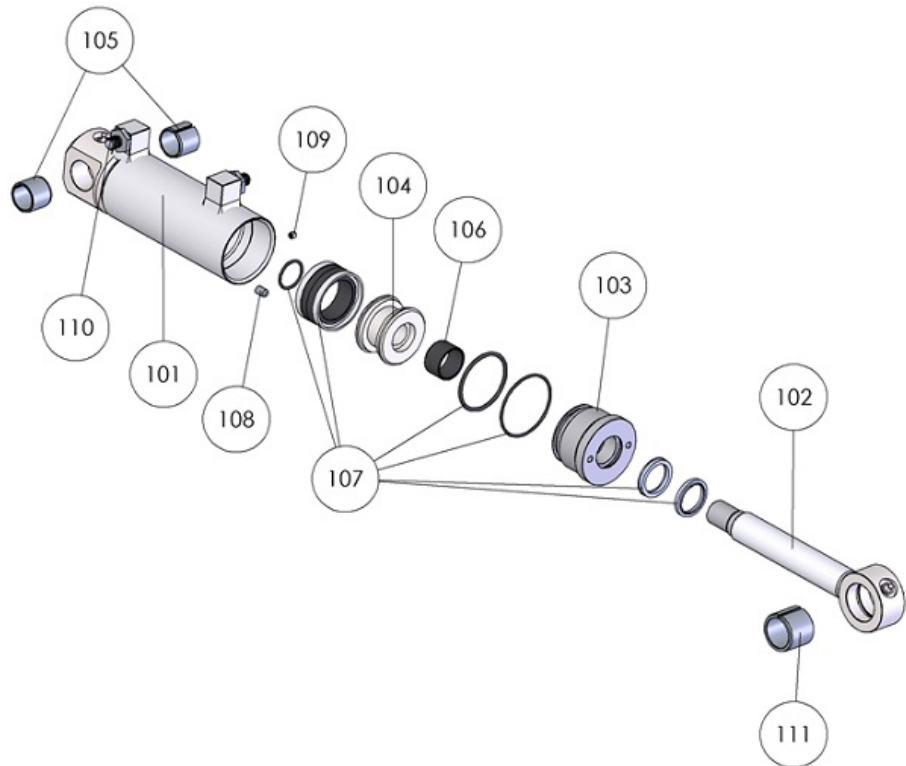


S100-D demolition and sorting grab			
order No.	position	qty	description
S100D.001	001	1	Welded main frame construction S100-D
S100D.002	002	1	Shell left (short lever) S100-D
S100D.003	003	1	Shell right (long lever) S100-D
S100D.004	004	1	Welded rotator frame construction S100-D
S100D.005	005	1	Welded linkage construction S100-D
S100D.006	006	1	Hydraulic cylinder S100-D
S100D.007	007	1	Baseplate head S100-D
S100D.008	008	1	Slewing ring S100-D
S100D.009	009	2	Main hinge pin Ø25mm S100-D
S100D.010	010	1	Linkage axis Ø30mm (top/long) S100-D
S100D.011	011	1	Linkage axis Ø25mm (under/short) S100-D
S100D.012	012	2	Disk spring S100-D
S100D.013	013	2	Castellated nut M20 S100-D
S100D.014	014	1	Lock bushing linkage axis top/long S100-D
S100D.015	015	1 set	Bolt/nut for lock bushing S100-D
S100D.016	016	1 set	Bolt set pressure relief unit S100-D
S100D.017	017	2	Bearings right shell (long hinge) S100-D
S100D.018	018	2	Barings left shell (short hinge) S100-D
S100D.019	019	4	Bearings main frame S100-D
S100D.020	020	1	Locker-u S100-D
S100D.021	021	1 set	Lubrication nipple 1/8"G (11 pcs) S100-D
S100D.022	022	2	Shell hinge short S100-D
S100D.023	023	2	Shell hinge long S100-D
S100D.024	024	4	Shell hinge support S100-D
S100D.025	025	1 set	Fixed blade S100-D
S100D.026	026	1 set	O-ring C.O.D. (2 pcs) S100-D
S100D.028	028	1 set	Hose kit (2 pcs) S100-D
S100D.029	029	1	V-ring (central ring) S100-D
S100D.030	030	1 set	Bolt set slewing ring S100-D
S100D.031	031	1	Hydro motor S100-D
S100D.032	032	1 set	Seal kit hydro motor S100-D
S100D.033	033	1	Gear S100-D
S100D.034	034	1 set	O-ring pressure relief unit (2 pcs) S100-D
S100D.035	035	1	Dividing block/pressure relief unit S100-D
S100D.036	036	1	C.O.D. complete S100-D
S100D.037	037	1 set	Bolt set C.O.D. (2 pcs) S100-D
S100D.038	038	1 set	Bolt set hydro motor S100-D
S100D.039	039	2	S100-D
S100D.056	056	1	Slewing ring seal S100-D
S100D.PBS	PBS	1 set	Maintenance kit pivot points (incl. all axes, bushes etc.) S100-D

S100-D
standard hole pattern

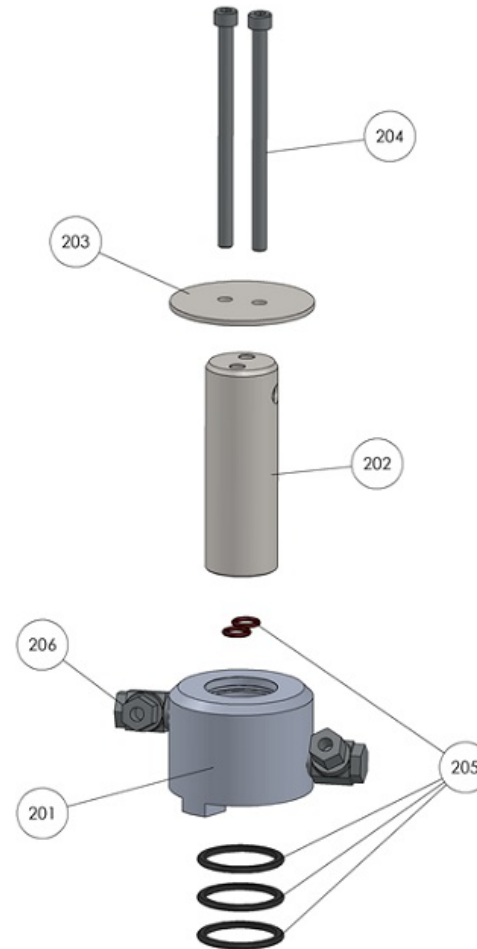


S100-D cylinder			
order No.	position	qty	description
S100D.101	101	1	Cylinder housing S100-D
S100D.102	102	1	Piston rod S100-D
S100D.103	103	1	Cylinder nut S100-D
S100D.104	104	1	Piston rod S100-D
S100D.105	105	2	Bearing cylinder housing S100-D
S100D.106	106	1	Bearing cylinder nut S100-D
S100D.107	107	1 set	Cylinder seal kit S100-D
S100D.108	108	1	Secure bolt M8x12 S100-D
S100D.109	109	1	Secure bolt M6x6 S100-D
S100D.110	110	1 set	Cylinder nipple set (2 pcs) S100-D
S100D.111	111	1	Bearing cilinder piston S100-D



versie 15-3-2018

S100-D central oil distributor (C.O.D.)			
order No.	position	qty	description
S100D.201	201	1	C.O.D. housing S100-D
S100D.202	202	1	C.O.D. rotor Ø40 mm S100-D
S100D.203	203	1	C.O.D. cover S100-D
S100D.204	204	1 set	Bolt set C.O.D. (2 pcs) S100-D
S100D.205	205	1	Seal kit C.O.D. S100-D
S100D.206	206	1 set	Connection nipples C.O.D. housing (4 pcs) S100-D



versie 15-3-2018