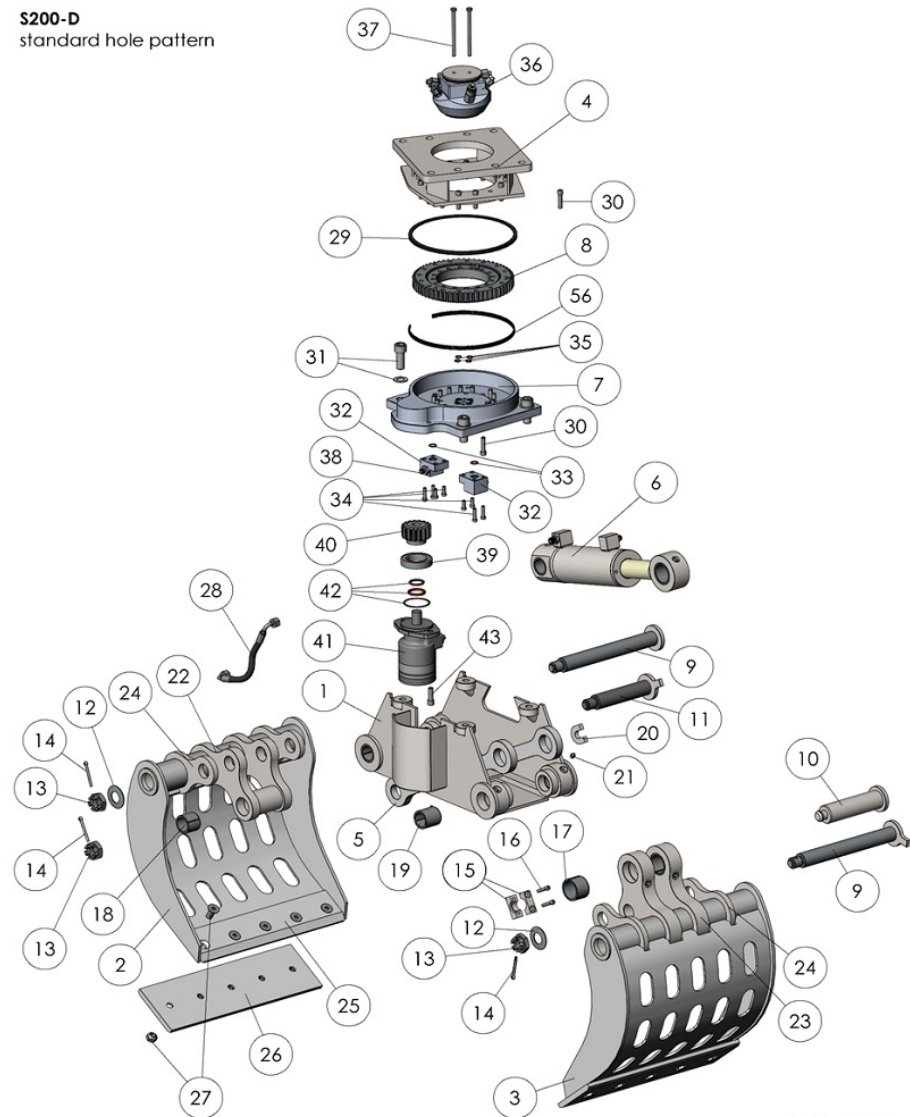


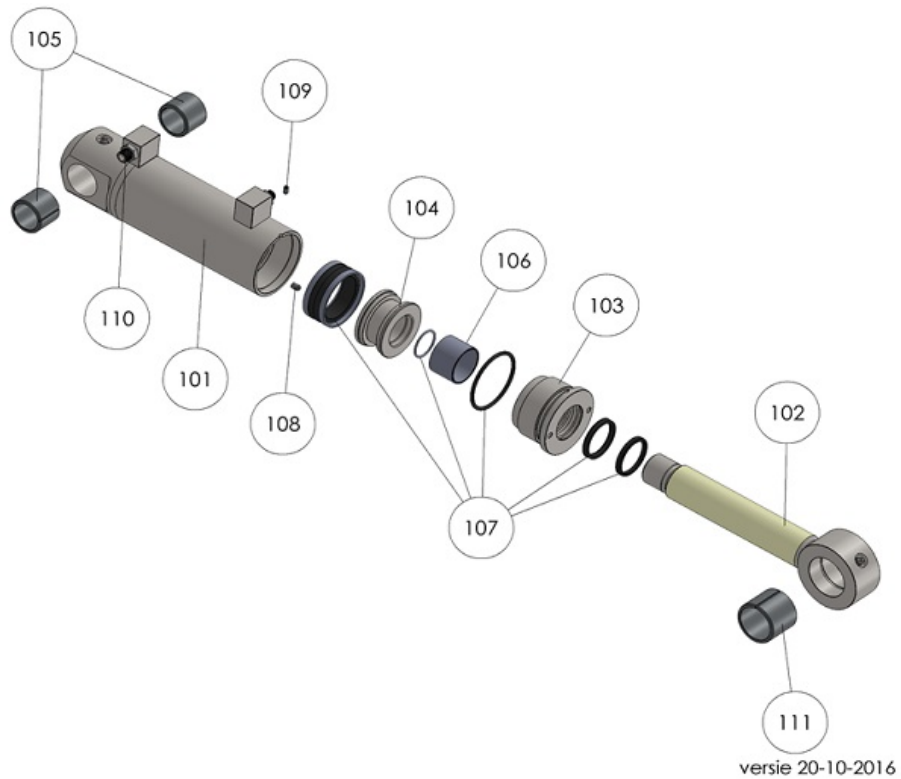
S200-D demolition and sorting grab

order No.	position	qty	description
S200D.001	001	1	Welded main frame construction S200-D
S200D.002	002	1	Shell left (short lever) S200-D
S200D.003	003	1	Shell right (long lever) S200-D
S200D.004	004	1	Welded rotator frame construction S200-D
S200D.005	005	1	Welded linkage construction S200-D
S200D.006	006	1	Hydraulic cylinder S200-D
S200D.007	007	1	Baseplate head S200-D
S200D.008	008	1	Slewing ring S200-D
S200D.009	009	2	Main hinge pin Ø40mm S200-D
S200D.010	010	1	Linkage axis Ø50mm (top/long) S200-D
S200D.011	011	1	Linkage axis Ø40mm (under/short) S200-D
S200D.012	012	3	Disk spring S200-D
S200D.013	013	3	Castellated nut M30 S200-D
S200D.014	014	3	Spline pin 6,3mm x 63 secure on M30 S200-D
S200D.015	015	1 set	Locker set linkage axis top/long (2 pcs) S200-D
S200D.016	016	1 set	Bolt set for locker set linkage axis top/long S200-D
S200D.017	017	2	Bearings right shell (long hinge) S200-D
S200D.018	018	2	Barings left shell (short hinge) S200-D
S200D.019	019	4	Bearings main frame S200-D
S200D.020	020	2	Locker-u S200-D
S200D.021	021	1 set	Lubrication nipple 1/8"G (11 pcs) S200-D
S200D.022	022	2	Shell hinge short S200-D
S200D.023	023	2	Shell hinge long S200-D
S200D.024	024	4	Shell hinge support S200-D
S200D.025	025	2	Fixed blade S200-D
S200D.026	026	1 set	Exchangeable wear blades (2 pcs) S200-D
S200D.027	027	1 set	Bolt set exchangeable wear blades (for 2 blades) S200-D
S200D.028	028	1 set	Hose kit main frame (2 pcs) S200-D
S200D.029	029	1	V-ring (central ring) S200-D
S200D.030	030	1 set	Bolt set slewing ring S200-D
S200D.031	031	1 set	Bolt set base plate (4 pcs) S200-D
S200D.032	032	2	Connection block base plate S200-D
S200D.033	033	1 set	O-ring connection block base plate (2 pcs) S200-D
S200D.034	034	1 set	Bolt set C.O.D. connection block S200-D
S200D.035	035	1 set	O-ring C.O.D. (4 pcs) S200-D
S200D.036	036	1	C.O.D. complete S200-D
S200D.037	037	1 set	Bolt set C.O.D. (2 pcs) S200-D
S200D.038	038	1 set	Nipples base plate (4 pcs) S200-D
S200D.039	039	1	Bearing gear S200-D
S200D.040	040	1	Gear S200-D
S200D.041	041	1	Hydro motor S200-D
S200D.042	042	1 set	Seal kit hydro motor S200-D
S200D.043	043	1 set	Bolt set hydro motor S200-D
S200D.056	056	1	Slewing ring seal S200-D
S200D.PBS	PBS	1 set	Maintenance kit pivot points (incl. all axes, bushes etc.) S200-D

S200-D
standard hole pattern

versie 28-9-2016

S200-D cylinder			
order No.	position	qty	description
S200D.101	101	1	Cylinder housing S200-D
S200D.102	102	1	Piston rod S200-D
S200D.103	103	1	Cylinder nut S200-D
S200D.104	104	1	Piston rod S200-D
S200D.105	105	2	Bearing cylinder housing S200-D
S200D.106	106	1	Bearing cylinder nut S200-D
S200D.107	107	1 set	Cylinder seal kit S200-D
S200D.108	108	1	Secure bolt M8x12 S200-D
S200D.109	109	1	Secure bolt M6x6 S200-D
S200D.110	110	1 set	Cylinder nipple set (2 pcs) S200-D
S200D.111	111	1	Bearing cilinder piston S200-D



S200-D central oil distributor (C.O.D.)			
order No.	position	qty	description
S200D.201	201	1	C.O.D. housing S200-D
S200D.202	202	1	C.O.D. rotor Ø60 mm S200-D
S200D.203	203	1	C.O.D. cover S200-D
S200D.204	204	1 set	Bolt set C.O.D. (2 pcs) S200-D
S200D.205	205	1	Pressure relief valve (cross over) S200-D
S200D.206	206	1 set	Connection nipples C.O.D. housing (4 pcs) S200-D
S200D.207	207	1 set	Seal kit C.O.D. S200-D

