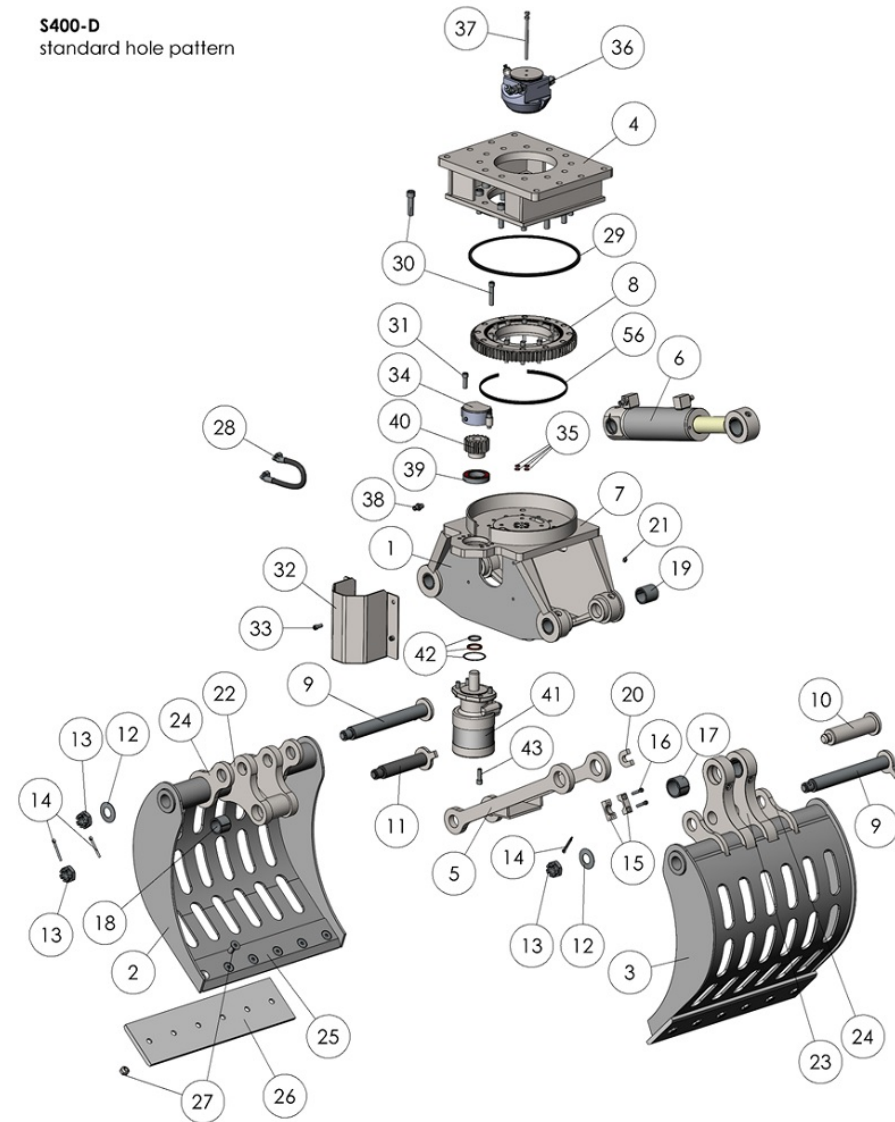
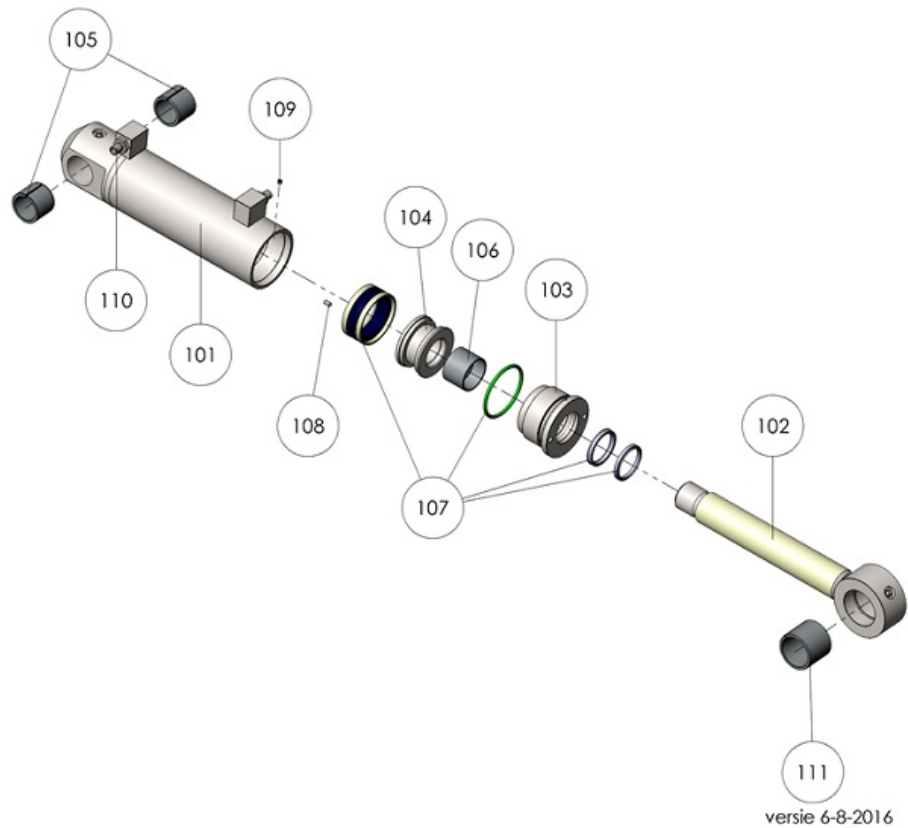


## S400-D demolition and sorting grab

order No.	position	qty	description
S400D.001	001	1	Welded main frame construction S400-D
S400D.002	002	1	Shell left (short lever) S400-D
S400D.003	003	1	Shell right (long lever) S400-D
S400D.004	004	1	Welded rotator frame construction S400-D
S400D.005	005	1	Welded linkage construction S400-D
S400D.006	006	1	Hydraulic cylinder S400-D
S400D.007	007	1	Baseplate head S400-D
S400D.008	008	1	Slewing ring S400-D
S400D.009	009	2	Main hinge pin Ø45mm S400-D
S400D.010	010	1	Linkage axis Ø50mm (top/long) S400-D
S400D.011	011	1	Linkage axis Ø40mm (under/short) S400-D
S400D.012	012	3	Disk spring S400-D
S400D.013	013	3	Castellated nut M30 S400-D
S400D.014	014	3	Spline pin 6,3mm x 63 secure on M30 S400-D
S400D.015	015	1 set	Locker set linkage axis top/long (2 pcs) S400-D
S400D.016	016	1 set	Bolt set for locker set linkage axis top/long S400-D
S400D.017	017	2	Bearings right shell (long hinge) S400-D
S400D.018	018	2	Barings left shell (short hinge) S400-D
S400D.019	019	4	Bearings main frame S400-D
S400D.020	020	2	Locker-u S400-D
S400D.021	021	1 set	Lubrication nipple 1/8"G (11 pcs) S400-D
S400D.022	022	2	Shell hinge short S400-D
S400D.023	023	2	Shell hinge long S400-D
S400D.024	024	4	Shell hinge support S400-D
S400D.025	025	2	Fixed blade S400-D
S400D.026	026	1 set	Exchangeable wear blades (2 pcs) S400-D
S400D.027	027	1 set	Bolt set exchangeable wear blades (for 2 blades) S400-D
S400D.028	028	1 set	Hose kit main frame (2 pcs) S400-D
S400D.029	029	1	V-ring (central ring) S400-D
S400D.030	030	1 set	Bolt set slewing ring S400-D
S400D.031	031	1 set	Bolt set gear cover S400-D
S400D.032	032	1	Cover hydraulic motor S400-D
S400D.033	033	1 set	Bolt set hydraulic motor S400-D
S400D.034	034	1	Cover gear S400-D
S400D.035	035	1 set	O-ring to C.O.D. (4 pieces) S400-D
S400D.036	036	1	C.O.D. complete S400-D
S400D.037	037	1 set	Bolt set C.O.D. (2 pcs) S400-D
S400D.038	038	1 set	Baseplate nipples (4 pcs) S400-D
S400D.039	039	1	Bearing gear S400-D
S400D.040	040	1	Gear S400-D
S400D.041	041	1	Hydro motor S400-D
S400D.042	042	1 set	Seal kit hydro motor S400-D
S400D.043	043	1 set	Bolt set hydromotor S400-D
S400D.056	056	1	Slewing ring seal S400-D
S400D.PBS	PBS	1 set	Maintenance kit pivot points (incl. all axes, bushes etc.) S400-D

S400-D  
standard hole pattern

S400-D cylinder			
order No.	position	qty	description
S400D.101	101	1	Cylinder housing S400-D
S400D.102	102	1	Piston rod S400-D
S400D.103	103	1	Cylinder nut S400-D
S400D.104	104	1	Piston rod S400-D
S400D.105	105	2	Bearing cylinder housing S400-D
S400D.106	106	1	Bearing cylinder nut S400-D
S400D.107	107	1 set	Cylinder seal kit S400-D
S400D.108	108	1	Secure bolt M8x12 S400-D
S400D.109	109	1	Secure bolt M6x6 S400-D
S400D.110	110	1 set	Cylinder nipple set (2 pcs) S400-D
S400D.111	111	1	Bearing cilinder piston S400-D



S400-D central oil distributor (C.O.D.)			
order No.	position	qty	description
S400D.201	201	1	C.O.D. housing S400-D
S400D.202	202	1	C.O.D. rotor Ø60 mm S400-D
S400D.203	203	1	C.O.D. cover S400-D
S400D.204	204	1 set	Bolt set C.O.D. (2 pcs) S400-D
S400D.205	205	1	Pressure relief valve (cross over) S400-D
S400D.206	206	1 set	Connection nipples C.O.D. housing (4 pcs) S400-D
S400D.207	207	1 set	Seal kit C.O.D. S400-D

