



ADVANCED CONSTRUCTION & DEMOLITION EQUIPMENT

ASB75 PART LIST 3/2018

 **Hydraulische Hamer**

 **Hydrauliek Hammer**

 **Hydraulic Breaker**

 **Marteaux Hydrauliques**

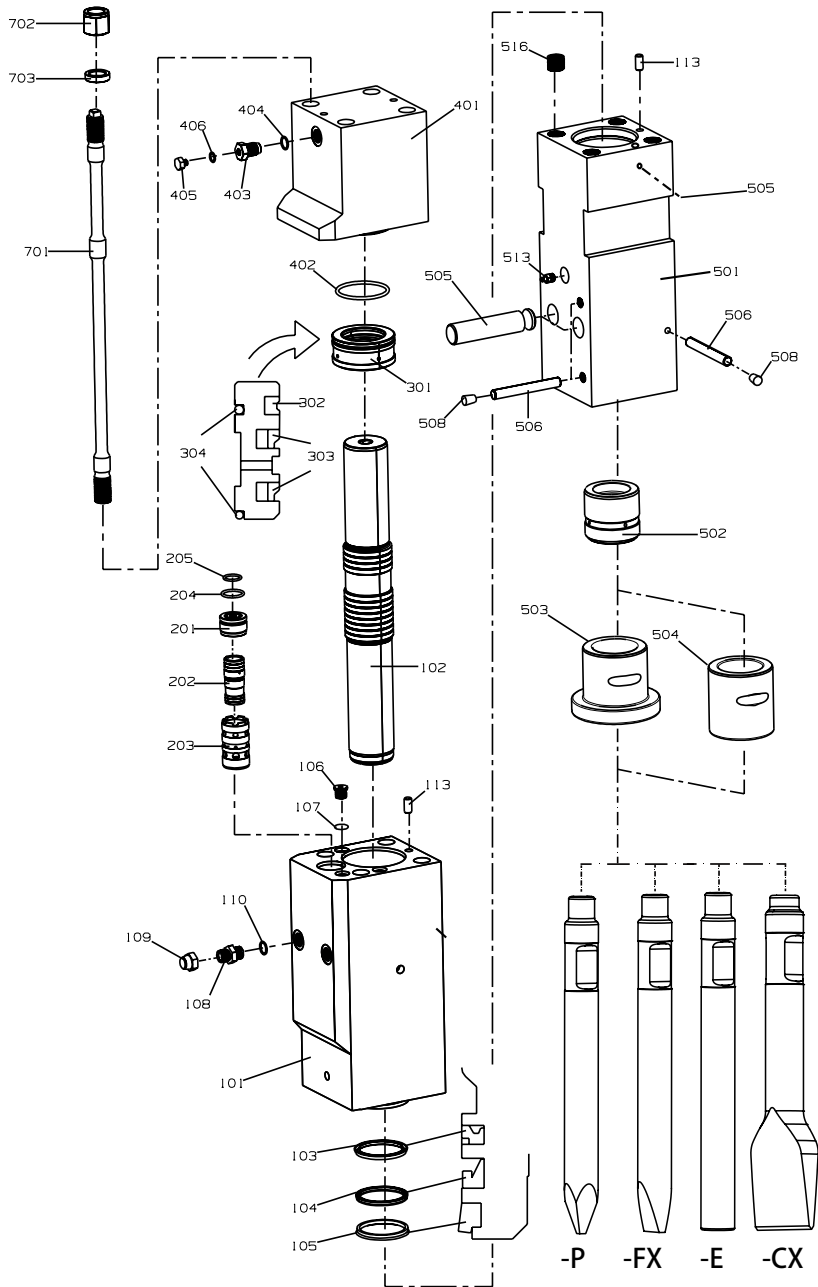


ACDE EUROPE B.V.
Frans Halsstraat 5
6901 DC Zevenaar
The Netherlands

Phone
E-mail
Web
Mobile

+31 316 26 72 91
info@acde-europe.com
www.acde-europe.com
+31 6 53 150 283

ASB75 BODY

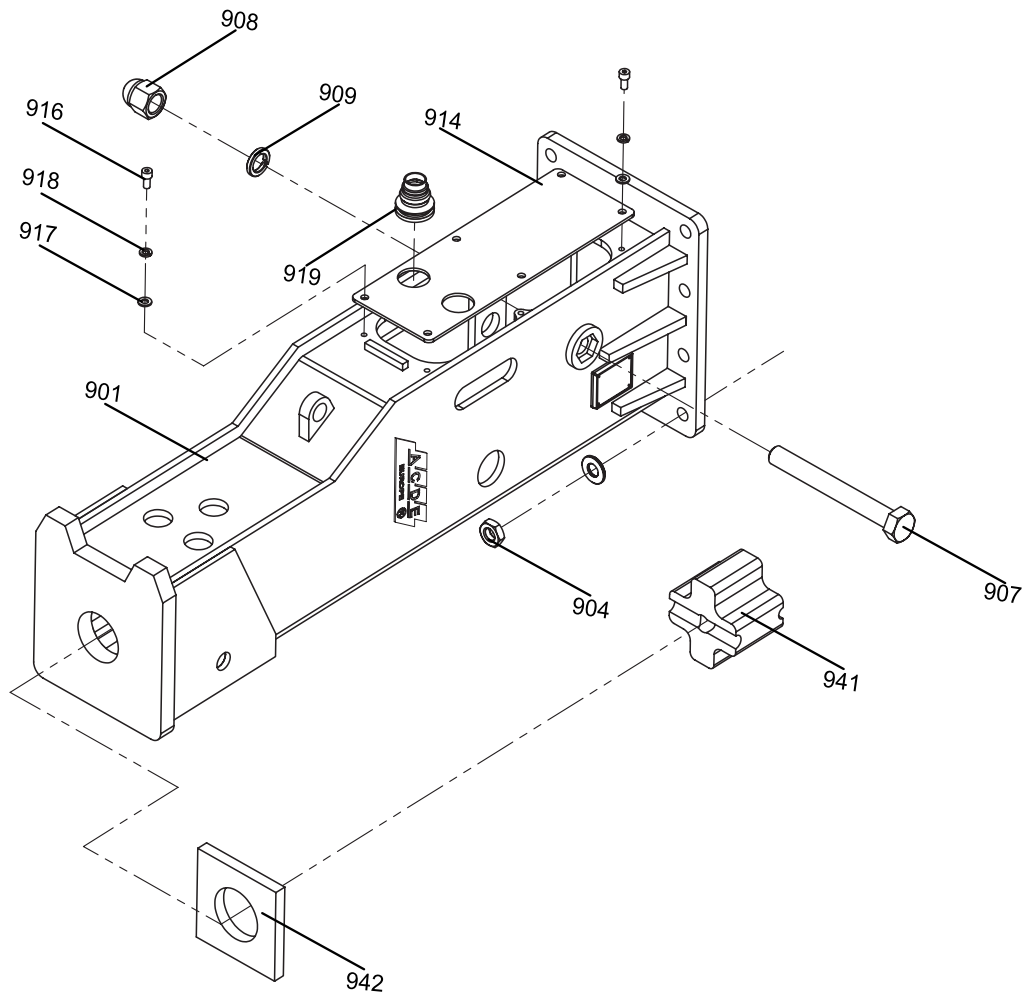


ASB75 PART LIST

MODEL	DESCRIPTION	SPECIFICATION	QUANTITY
ASB-75-100	CYLINDER ASSEMBLY		
ASB-75-101	CYLINDER	165*204*426	1
ASB-75-102	PISTON	Φ73*Φ81*Φ75*560	1
ASB-75-103	BUFFER RING	HBV 75*90.5*6	1
ASB-75-104	U-PACKING	ISI 75*85*6	1
ASB-75-105	DUST SEAL	DSI 75*85*6*8	1
ASB-75-106	CYLINDER PLUG	4HN-18	4
ASB-75-107-SKX	CYLINDER PLUG O-RING	1BP-16	4
ASB-75-108	IN/OUT ADAPTER	1BG-08	2
ASB-75-109	IN/OUT ADAPTER COVER	9B-08	2
ASB-75-110-SKX	IN/OUT ADAPTER O-RING	1BP-18	2
ASB-75-111	EXHAUST VALVE	G1/2	1
ASB-75-112-SKX	O-RING	1BP-18	1
ASB-75-113	GUIDE PIN	Φ12.5*30	2
ASB-75-200	VALVE ASSEMBLY		
ASB-75-201	VALVE COVER	φ 45*30	1
ASB-75-202	VALVE	φ 33.2* φ 34* φ 32.5*77	1
ASB-75-203	VALVE SLEEVE	φ 45*80.5	1
ASB-75-204-SKX	O-RING	1BG-40	1
ASB-75-205-SKX	O-RING	1BG-25	1
ASB-75-300	PISTON BUSH ASSEMBLY		
ASB-75-301	PISTON BUSH	Φ105*48	1
ASB-75-302-SKX	GAS SEAL	IKH-73*82.5*7.3	1
ASB-75-303-SKX	STEP SEAL	SPNS-73	2
ASB-75-304-SKX	O-RING	1BG-100	2
ASB-75-400	BACK HEAD ASSEMBLY		
ASB-75-401	BACK HEAD	165*204*209	1
ASB-75-402-SKX	O-RING	1BG-100	1
ASB-75-403	GAS CHARGING VALVE	G 1/2'	1
ASB-75-404-SKX	O-RING	1BP-18	1
ASB-75-405	GAS CHARGING VALVE COVER	M10*P1.0	1
ASB-75-406-SKX	O-RING	1BP-12	1
ASB-75-500	FRONT HEAD ASSEMBLY		
ASB-75-501	FRONT HEAD	165*165*438	1
ASB-75-502	THRUST BUSH	φ 75* φ 91.5*84	1
ASB-75-503	CHISEL BUSH	φ 75* φ 108*114.5	1
ASB-75-504	(SILENCED CHISEL BUSH)	φ 75* φ 108*89.5	1
ASB-75-505	CHISEL PIN	Φ35*164	2
ASB-75-506	LOCKING PIN	φ 16x127	3
ASB-75-507-P	MOIL POINT	φ 75*712	2
ASB-75-507-FX	CHISEL POINT	φ 75*712	2
ASB-75-507-E	BLUNT POINT	φ 75*712	2
ASB-75-507-CX	SPADE TOOL	φ 75*712	2
ASB-75-508	RUBBER PLUG	φ 16x20.5	3
ASB-75-513	GREASE NIPPLE	G 1/4'	1
ASB-75-515	PROCESS PLUG	M12X1.75X10	1
ASB-75-516	BOLT	ST27*2*18	4
ASB-75-700	THROUGH BOLT ASSEMBLY		
ASB-75-701	THROUGH BOLT	M27X2X687	4
ASB-75-702	SCREW NUT(UPPER)	M27X2X37	4
ASB-75-703	WASHER	φ 43* φ 28*10	4



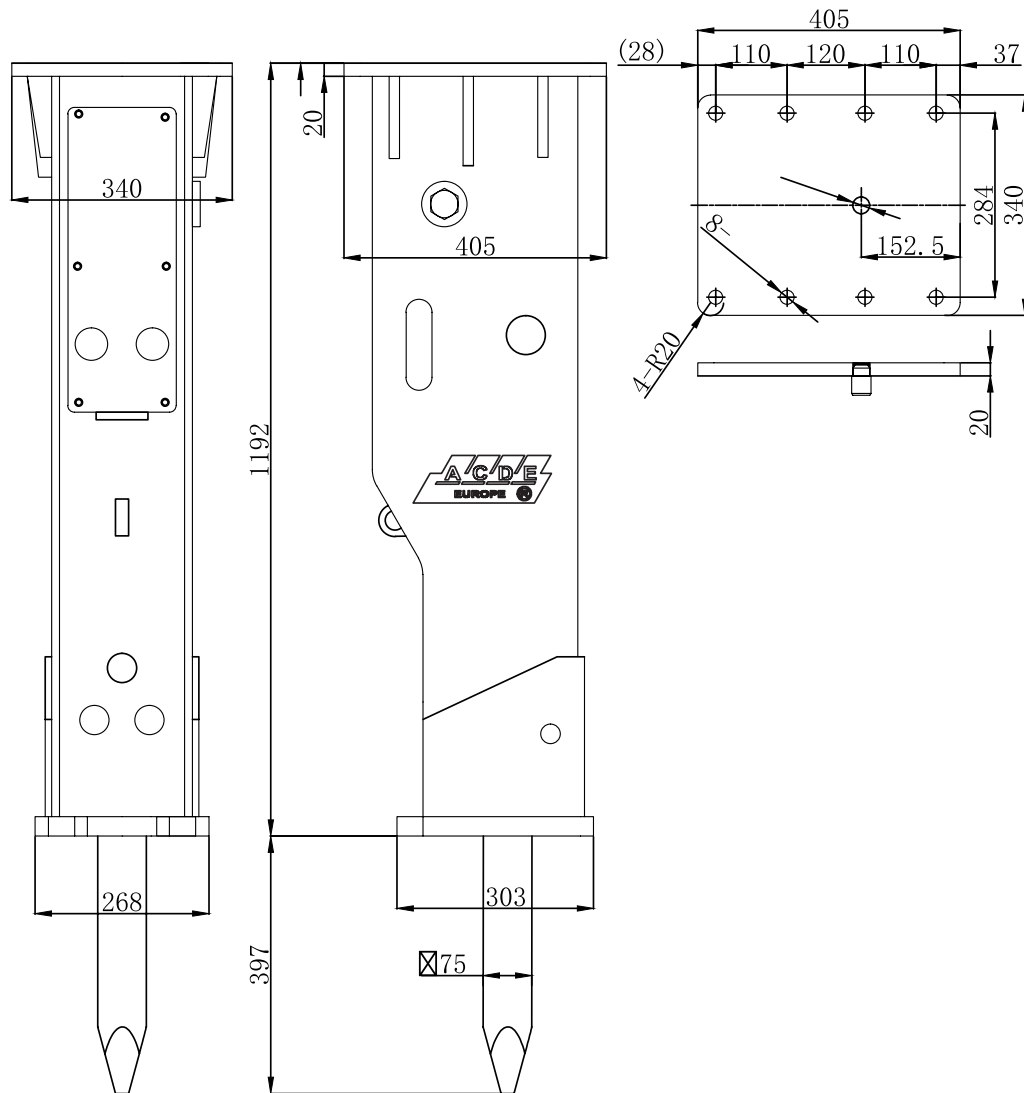
ASB75 HOUSING



ASB70 PART LIST

NO.	DESCRIPTION	SPECIFICATION	QUANTITY
ASB75-900	FRAME ASS'Y		
ASB75-901	FRAME(BOX TYPE)		1
ASB75-902	MOUNT CAP		1
ASB75-903	M/C HEX BOLT	M20 × 70	8
ASB75-904	M/C HEX NUT	M20	8
ASB75-905	M/C SPRING WASHER	20	16
ASB75-907	SIDE HEX BOLT	M27 × 2 × 255	1
ASB75-908	HEX NUT	M27 × 2	1
ASB75-909	WASHER	φ 27.5 × φ 41.1 × 6.8	1
ASB75-914	UP SIDE DAMPER	470 × 167 × 5	1
ASB75-916	HEX BOLT	M10 × 20	6
ASB75-917	WASHER	10	6
ASB75-918	SPRING WASHER	10	6
ASB75-919	IN/OUT PLUG		2
ASB75-940	BUFFER PLATE ASS'		
ASB75-941	BACK BUFFER	150 × 140 × 107	1
ASB75-942	LOWER DAMPER	165 × 165 × 20	1
ASB75-1102	PIN		2
ASB75-1103	T-BUSH		4
ASB75-1104	PIN HEX BOLT	M12 × 90	2
ASB75-1105	PIN HEX NUT	M12	2
ASB75-1106	STOP BAR		2

ASB75 HOUSING MEASUREMENTS



ACCESSOIRES

IMAGE	MODELL/TYPE	DESCRIPTION
	ACDE	N2 filling device
	ACDE	Hammer paste cartridge
	ACDE	Grease gun + cartridge

BRACKETS

IMAGE	MODELL	DESCRIPTION
	ACDE	CW 05
	ACDE	MS 01
	ACDE	MS 03

