



ADVANCED CONSTRUCTION & DEMOLITION EQUIPMENT

ASB125A PART LIST 3/2018

 **Hydraulische Hamer**

 **Hydrauliek Hammer**

 **Hydraulic Breaker**

 **Marteaux Hydrauliques**

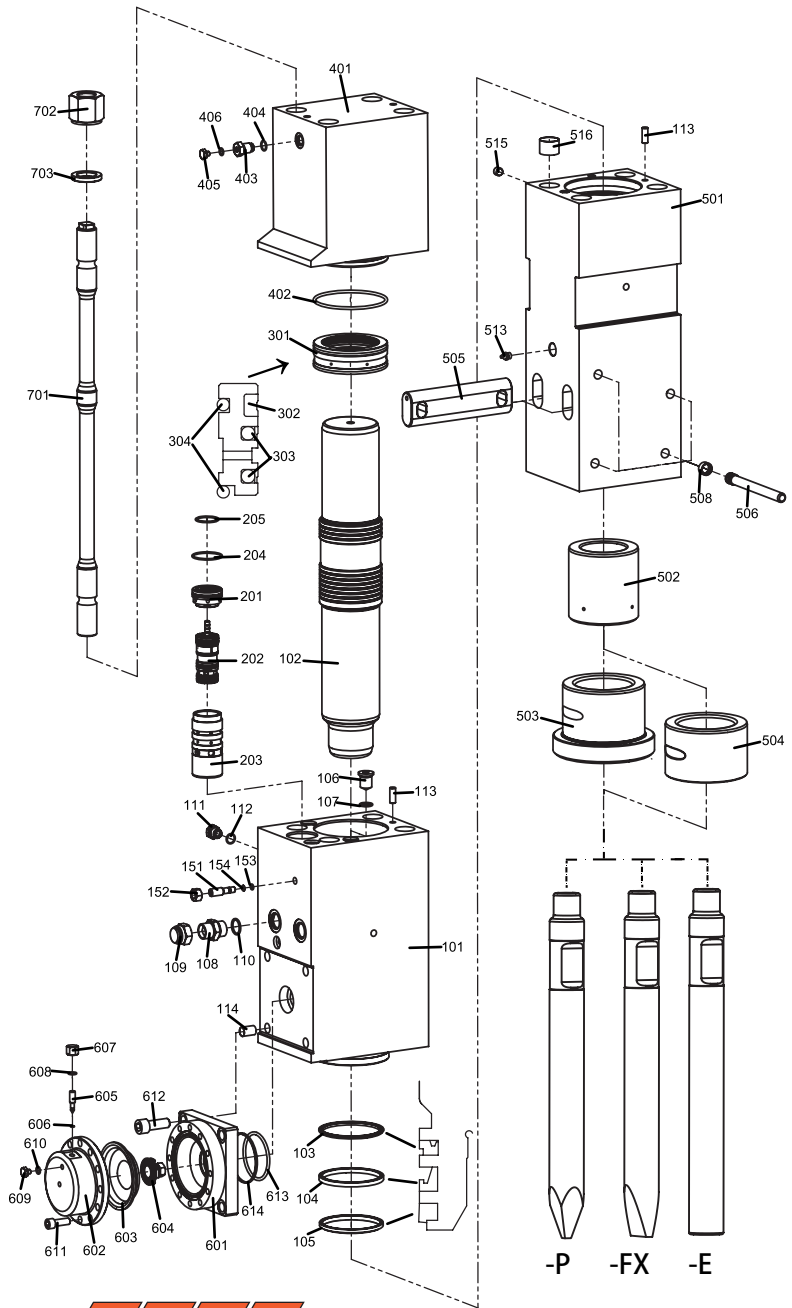


ACDE EUROPE B.V.
Frans Halsstraat 5
6901 DC Zevenaar
The Netherlands

Phone
E-mail
Web
Mobile

+31 316 26 72 91
info@acde-europe.com
www.acde-europe.com
+31 6 53 150 283

ASB125A BODY



ASB125A PART LIST

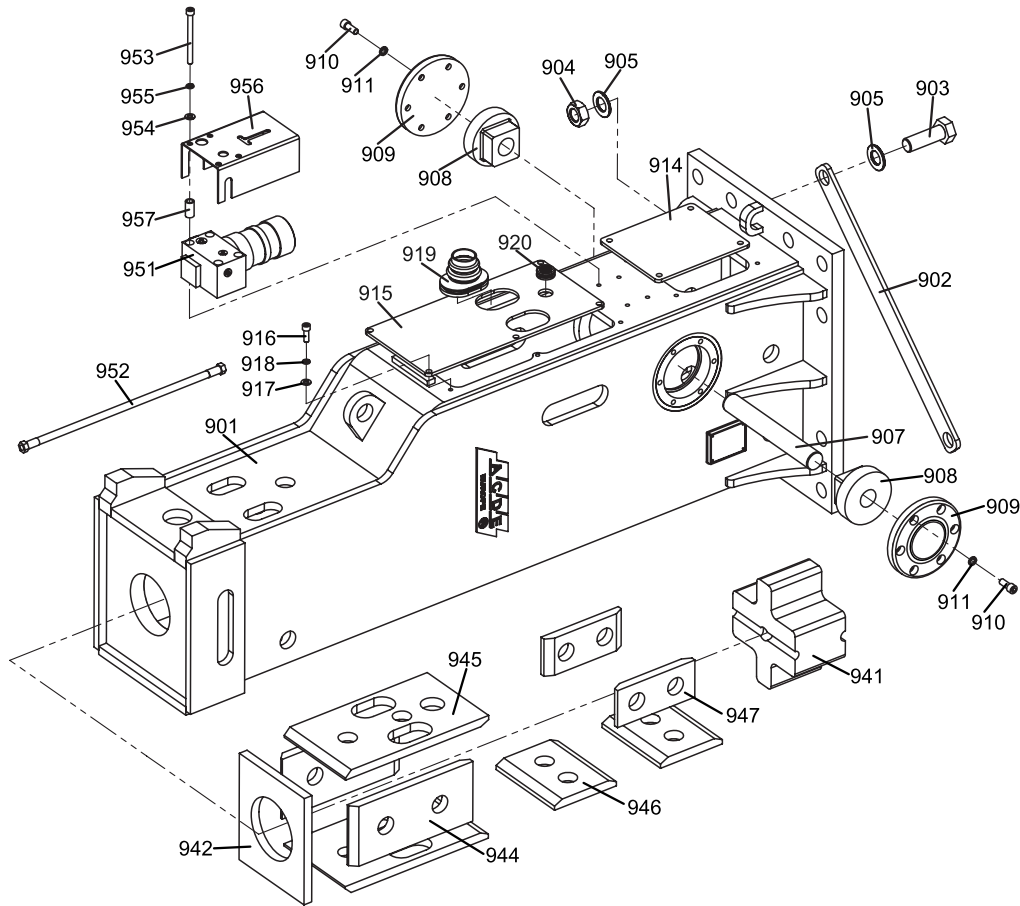
MODEL	DESCRIPTION	SPECIFICATION	QUANTITY
ASB-125A-100	CYLINDER ASSEMBLY		
ASB-125A-101	CYLINDER	222*298*510	1
ASB-125A-102	PISTON	φ 123.5* φ 133* φ 125*740	1
ASB-125A-SKX-103	BUFFER RING	HBY 125*140.5*6	1
ASB-125A-SKX-104	U-PACKING	IDI 125*140*10	1
ASB-125A-SKX-105	DUST SEAL	DSI 125*138*7*9.5	1
ASB-125A-106	CYLINDER PLUG	4HN-25	3
ASB-125A-SKX-107	CYLINDER PLUG O-RING	1BP-22A	3
ASB-125A-108	IN/OUT ADAPTER	1BG-16	2
ASB-125A-109	IN/OUT ADAPTER COVER	9B-16	2
ASB-125A-SKX-110	IN/OUT ADAPTER O-RING	1BP-29	2
ASB-125A-111	EXHAUST VALVE	G 1/2'	1
ASB-125A-SKX-112	EXHAUST VALVE O-RING	1BP-18	1
ASB-125A-113	GUIDE PIN	φ 12.5*30	2
ASB-125A-114	BOLT	ST20*2.5*12	4
ASB-125A-150	VALVE ADJUSTER ASSEMBLY		
ASB-125A-151	FRONT VALVE	M16*P1.5*60	1
ASB-125A-152	FRONT VALVE NUT	M16*P1.5*14	1
ASB-125A-SKX-153	FRONT VALVE O-RING	1BP-9	1
ASB-125A-SKX-154	FRONT VALVE WHITE RING	T3P-9	1
ASB-125A-200	VALVE ASSEMBLY		
ASB-125A-201	VALVE COVER	φ 65*36	1
ASB-125A-202	VALVE	φ 10*φ 49φ 46*134	1
ASB-125A-203	VALVE SLEEVE	φ 65*137	1
ASB-125A-SKX-204	O-RING	1BG-60	1
ASB-125A-SKX-205	O-RING	1BG-45	1
ASB-125A-300	PISTON BUSH ASSEMBLY		
ASB-125A-301	PISTON BUSH	φ 160*52	1
ASB-125A-SKX-302	GAS SEAL	IKH-123.5	1
ASB-125A-SKX-303	STEP SEAL	SPNS-123.5	2
ASB-125A-SKX-304	O-RING	1BG-150	2
ASB-125A-400	BACK HEAD ASSEMBLY		
ASB-125A-401	BACK HEAD	222*298*331	1
ASB-125A-SKX-402	O-RING	1BG-150	1
ASB-125A-403	GAS CHARGING VALVE	G 1/2'	1
ASB-125A-SKX-404	O-RING	1BP-18	1
ASB-125A-405	GAS CHARGING VALVE COVER	M10*P1.0	1
ASB-125A-SKX-406	O-RING	1BP-12	1



ASB125A PART LIST

MODEL	DESCRIPTION	SPECIFICATION	QUANTITY
ASB-125A-500	FRONT HEAD ASSEMBLY		
ASB-125A-501	FRONT HEAD	222*258*642	1
ASB-125A-502	THRUST BUSH	Φ 125*Φ 151*158	1
ASB-125A-503	CHISEL BUSH	Φ 125*Φ 178*155	1
ASB-125A-504	(SILENCED CHISEL BUSH)	Φ 125*Φ 178*115	1
ASB-125A-505	CHISEL PIN	76*40*256	2
ASB-125A-506	BUSHING PIN	Φ 20*Φ 23*221	4
ASB-125A-507-P	MOIL POINT	Φ 125*1100	2
ASB-125A-507-FX	CHISEL POINT	Φ 125*1100	2
ASB-125A-507-E	BLUNT POINT	Φ 125*1100	2
ASB-125A-508	RUBBER PLUG	Φ 20*13	4
ASB-125A-513	GREASE NIPPLE	G 1/4"	1
ASB-125A-515	PROCESS PLUG	4TN-06	1
ASB-125A-516	BOLT	M42*P3.0*16.5	4
ASB-125A-600	ACCUMULATOR ASSEMBLY		
ASB-125A-601	ACCUMULATOR BOTTOM	195*195*69	1
ASB-125A-602	ACCUMULATOR COVER	Φ 192*66	1
ASB-125A-603	DIAPHRAGM	Φ 150*40	1
ASB-125A-SKX-604	INNER VALVE ASSEMBLY	Φ 59*14	1
ASB-125A-605	GAS CHARGING ADJUSTER	M12*P1.25	1
ASB-125A-SKX-606	GAS CHARGING O-RING	1BP-5	1
ASB-125A-607	GAS CHARGING CAP	M12*P1.25	1
ASB-125A-SKX-608	GAS CHARGING CAP O-RING	1BP-14	1
ASB-125A-609	ACC'COVER CAP	M10*P1.0	1
ASB-125A-SKX-610	ACC'COVER CAP O-RING	1BP-12	1
ASB-125A-611	INNER COVER HEX.SOCKET BOLT	M14X1.5X40	12
ASB-125A-612	INNER BOTTOM HEX.SOCKET BOLT	M20X2.5X55	4
ASB-125A-SKX-613	O-RING	1BP-95	1
ASB-125A-SKX-614	WHITE RING	4BP-95	1
ASB-125A-700	THROUGH BOLT ASSEMBLY		
ASB-125A-701	THROUGH BOLT	RD42X4.233X916	4
ASB-125A-702	SCREW NUT (UPPER)	RD42X4.233X60	4
ASB-125A-703	WASHER	Φ 65*Φ 42*10	4

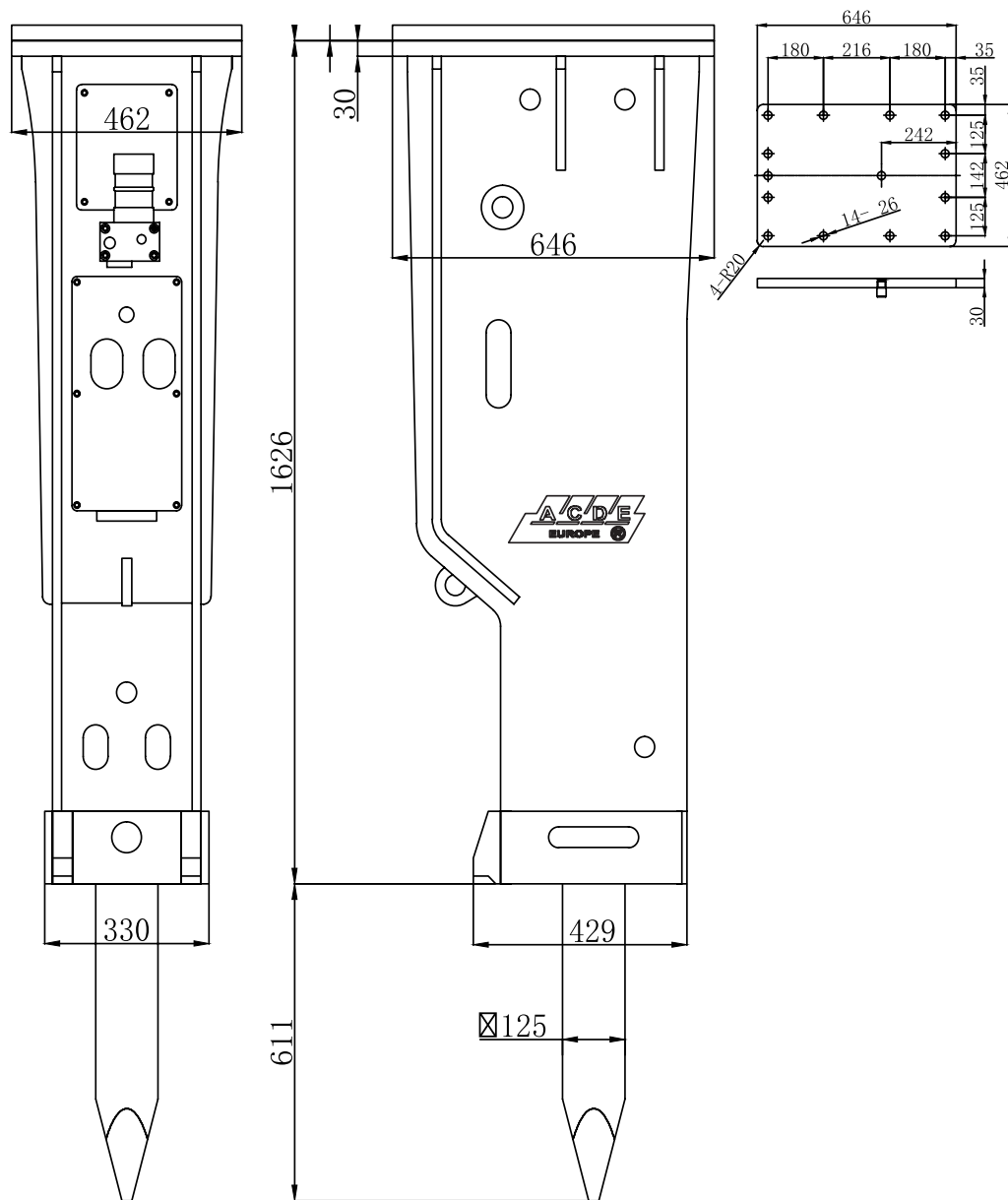
ASB125A HOUSING



ASB125A PART LIST

NO.	DESCRIPTION	SPECIFICATION	QUANTITY
ASB125A-900	FRAME ASS'Y		
ASB125A-901	FRAME(BOX TYPE)	495×630×1626	1
ASB125A-902	MOUNT CAP	652×50×10	1
ASB125A-903	M/C HEX BOLT	M30×110	12
ASB125A-904	M/C HEX NUT	M30	12
ASB125A-905	M/C SPRING WASHER	30	24
ASB125A-907	CLAMP DAMPER	φ 40×290	1
ASB125A-908	CLAMP BOLT	φ 120× φ 40×65×30	2
ASB125A-909	CLAMP BOLT COVER	φ 176×24	2
ASB125A-910	HEX BOLT	M12×30	12
ASB125A-911	HEX NUT	12	12
ASB125A-914	COVER PLATE-A	242×202×7	1
ASB125A-915	COVER PLATE-B	460×220×7	1
ASB125A-916	HEX BOLT	M10×30	10
ASB125A-917	WASHER	10	10
ASB125A-918	SPRING WASHER	10	10
ASB125A-919	IN/OUT PLUG	G1	2
ASB125A-920	IN/OUT PLUG COVER	φ 30	1
ASB125A-940	BUFFER PLATE ASS'		
ASB125A-941	BACK BUFFER	213×250×130	1
ASB125A-942	LOWER DAMPER	258×222×20	1
ASB125A-944	CLAMP DAMPER	310×145×20	2
ASB125A-945	SIDE DAMPER	370×210×20	2
ASB125A-946	UP&DOWN DAMPER	200×160×20	2
ASB125A-947	SIDE DAMPER	200×90×20	2
ASB125A-950	AUTOLUB SYSTEM		
ASB125A-951	AUTOLUB SYSTEM		1
ASB125A-952	OIL HOSE PLUG	G1/4	1
ASB125A-953	HEX BOLT	M10×120	4
ASB125A-954	WASHER	10	4
ASB125A-955	SPRING WASHER	10	4
ASB125A-956	AUTOLUB TOOL COVER		1
ASB125A-957	AUTOLUB TOOL NUT	φ 18× φ 12×35	4

ASB125A HOUSING MEASUREMENTS



ACCESSOIRES

IMAGE	MODELL/TYPE	DESCRIPTION
	ACDE	N2 filling device
	ACDE	Hammer paste cartridge
	ACDE	Grease gun + cartridge

BRACKETS

IMAGE	MODELL	DESCRIPTION
	ACDE	CW 05
	ACDE	MS 01
	ACDE	MS 03

