



Press Releases:
Comprehensive Solutions
with BEILITE® Europe and ACDE® Europe



Advanced Hydraulic Hammer & Attachment Technology



bauma
APRIL 7-13, 2025, MUNICH
BOOTH C5.348

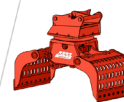


ACDE® Europe
Netherlands ☎ +31 316 267291
Niederlande ☐ +31 6 53150283
Switzerland ☎ +41 625880164
Schweiz ☐ +41 793649583

✉ info@acde-europe.com
🌐 www.acde-europe.com



ADVANCED CONSTRUCTION & DEMOLITION EQUIPMENT



Press Release: Hydraulic Breakers and Attachments for Mining, Tunneling, and Quarrying

Optimizing Surface and Underground Rock Excavation with ACDE® Europe and BEILITE® Europe

Efficient and controlled rock excavation is critical in mining, tunneling, and quarrying operations. Traditional methods such as blasting are increasingly restricted due to environmental regulations, safety concerns, and the need for precise excavation. Hydraulic breakers and specialized attachments from ACDE® Europe and BEILITE® Europe offer a safer, more controlled, and cost-effective alternative for primary and secondary rock breaking in surface and underground mining applications.

BEILITE® Europe BLTB-5 Series Hydraulic Breakers: Primary and Secondary Rock Excavation

Hydraulic breakers are the most effective method for secondary breaking, reducing oversized boulders in the rock pile without the risks associated with blasting. This approach improves overall safety while increasing the efficiency of material processing.

In primary rock excavation, BEILITE® Europe BLTB-5 Series breakers provide an environmentally friendly alternative to blasting, minimizing vibrations, noise, and the production of fine material that may be unsuitable for applications such as road construction. Selective mining with hydraulic breakers also enables the excavation of higher-quality material, increasing profitability.

For underwater rock excavation, all BEILITE® Europe hydraulic breaker models with "W" designation are equipped with underwater kits, ensuring that the percussion chamber remains under pressure to prevent water ingress. These breakers are ideal for harbor deepening, underwater trenching, and dredging applications.

In tunneling, mining, and demolition, dust suppression is a key challenge. ACDE® Europe offers an integrated Water Spraying System to reduce airborne dust and improve visibility and worker safety. This system includes:

- Water tank, pump, and piping system
- Spray plate and nozzle for optimal dust control
- Compatibility with both sound-suppressed and top-mount hydraulic breaker models

These solutions ensure compliance with environmental and occupational safety regulations, reducing dust-related hazards and equipment wear.

ACDE® Europe ARG-Series Stone Grapples – Precision Handling in Tough Environments

Once the rock is broken, efficient handling is crucial for mining and tunneling operations. The ACDE® Europe ARG-Series rock grapples provide:

- High clamping force for heavy rock handling
- Reinforced construction for high-impact applications
- Optimized kinematics for improved grip and material control

Designed for handling boulders, rock debris, and large stone blocks, the ACDE® Europe ARG-Series ensures efficiency in both mining and tunneling projects.

ACDE® Europe AMG-Series Multi-Grapples – Versatility for Aggregates and Bulk Materials

For transporting sand, gravel, and other aggregates, ACDE® Europe AMG Series multi-grapples provide unmatched versatility with:

- Low weight and short height, ideal for tight workspaces
- Motionless cylinders with end damping, reducing wear and extending service life
- Closed shell design for secure material handling
- Optional side plates, allowing use as a two-shell grab for bulk loading operations

Quarrying: The Right Tools for Every Step

In quarrying, hydraulic breakers play a crucial role in primary rock excavation and secondary breaking, reducing the need for explosives while increasing precision and efficiency. The BLTB-5 Series hydraulic hammers deliver powerful impact force, making them ideal for hard rock fragmentation, boulder breaking, and overburden removal.

For material handling, the ACDE® Europe ARG-Series rock grapples ensure safe and efficient movement of large stone blocks, while the ACDE® Europe AMG-Series multi-grapples offer excellent performance in handling aggregates, sand, and gravel. This combination allows quarry operators to streamline extraction, processing, and transportation, ultimately improving operational efficiency and reducing costs.

Shaping the Future of Mining, Tunneling, and Quarrying

By combining BLTB-5 Series hydraulic breakers for rock fragmentation, ACDE® Europe ARG-Series rock grapples for block handling, and AMG Series multi-grapples for aggregate transport, ACDE® Europe provides complete mining, tunneling, and quarrying solutions.

- Greater efficiency in rock excavation and material handling
- Reduced environmental impact with dust suppression and selective mining
- Lower operating costs by eliminating unnecessary blasting and minimizing fine material waste

See Our Innovations at BAUMA 2025

Visit ACDE® Europe & BEILITE® Europe at BAUMA 2025, Halle C5, Stand C5.348, to explore our latest advancements in mining, tunneling, and rock excavation technology.



ACDE® Europe
Netherlands ☎ +31 316 267291
Niederlande ☐ +31 6 53150283
Switzerland ☎ +41 625880164
Schweiz ☐ +41 793649583

✉ info@acde-europe.com
🌐 www.acde-europe.com



ADVANCED CONSTRUCTION & DEMOLITION EQUIPMENT



Press Release: Comprehensive Demolition Solutions with BEILITE® Europe and ACDE® Europe

A Complete Range of Attachments for Every Demolition Project

Demolition is a highly specialized field, requiring the right combination of hydraulic attachments to efficiently break, separate, and process materials. Whether dismantling brick, concrete, or steel structures, each project demands a strategic approach to maximize efficiency, reduce environmental impact, and optimize material recycling.

With the BEILITE® Europe BLTB-5 Series hydraulic breakers, ACDE® Europe ASG-Series sorting and demolition grapples, ACDE® Europe ASC-Series hydraulic pulverizers, and ACDE® Europe ACC-Series concrete crushers, contractors have a complete range of demolition tools to tackle any structure, from small buildings to large industrial sites.

BLTB-5 Series Hydraulic Breakers: Power for Concrete and Hard Materials

The BEILITE® Europe BLTB-5 Series hydraulic breakers are designed for primary and secondary demolition, delivering the impact force required to break through reinforced concrete, foundations, bridges, and road surfaces. Key advantages include:

- High-impact energy
- B-LUBE automatic greasing system for reduced wear and extended uptime
- B@TRACK&CHECK real-time monitoring system, optimizing maintenance and usage tracking
- Sound-suppressed models for urban demolition projects requiring reduced noise levels

Ideal for bridges, roads, industrial buildings, and reinforced concrete structures, the BLTB-5 Series ensures efficient and precise breaking of demolition materials.

ASG-Series Sorting & Demolition Grapples: Precision in Material Handling

After structures are demolished, sorting and handling materials efficiently is crucial for reducing waste and maximizing recycling potential. The ACDE® Europe ASG-Series sorting and demolition grapples provide:

- High clamping force and precise control, ensuring safe handling of demolition debris
- Heavy-duty construction, capable of lifting large concrete sections, bricks, steel, and wood
- 360-degree rotation, allowing precise sorting of materials directly at the demolition site

Whether for on-site material separation or bulk handling, the ASG-Series is essential for reducing landfill waste and improving recycling efficiency.

ACC-Series Concrete Crushers: Crushing Power for Reinforced Structures

The ACDE® Europe ACC-Series hydraulic concrete crushers are essential for selective demolition and material separation, providing:

- High crushing force, ideal for breaking reinforced concrete, bridges, and heavy structural elements
- Integrated steel cutting blades, allowing simultaneous separation of concrete and rebar
- Compact, lightweight design, making them suitable for use in confined spaces and high-reach demolition applications
- Equipped with a speed valve, optimizing cycle times for faster processing and improved efficiency

By reducing concrete to smaller, manageable pieces on-site, the ACC-Series crushers enhance efficiency in material recycling and transport.

ASC-Series Hydraulic Pulverizers: Maximum Efficiency with Speed Valve & Magnetic Separation

For projects requiring concrete processing and steel separation, the ACDE® Europe ASC-Series hydraulic pulverizers offer high crushing force, precision, and advanced technology. These attachments are particularly useful for:

- Breaking reinforced concrete while simultaneously separating rebar from the material
- Reducing concrete rubble into smaller, manageable pieces for transport or on-site reuse
- Enhancing material recycling efficiency, making it easier to repurpose crushed materials for backfilling and new construction
- Speed valve technology, reducing cycle times and increasing operational efficiency
- ASC-1750-2M model with integrated magnet, allowing automatic separation of rebar and ferrous materials directly on-site

These features make the ASC-Series hydraulic pulverizers a key tool for modern demolition and material recovery operations.

Complete Demolition Solutions for Every Project

With BEILITE® Europe hydraulic breakers, ACDE® Europe sorting grapples, hydraulic pulverizers, and concrete crushers, demolition contractors have the complete set of tools for:

- Controlled deconstruction of concrete, brick, and steel buildings
- Efficient breaking of reinforced concrete and road surfaces
- Sorting and processing materials for reuse and recycling
- Safe and precise handling of heavy debris in urban and industrial environments

This full-range approach allows demolition companies to work faster, safer, and more sustainably, meeting the growing demand for selective demolition and material recovery.

Meet Us at BAUMA 2025

Visit ACDE® Europe & BEILITE® Europe at BAUMA 2025, Halle C5, Stand C5.348, to explore our latest advancements in demolition technology. Our experts will be available to discuss the right equipment for your demolition needs, from breaking and sorting to processing and recycling.



ACDE® Europe

Netherlands ☎ +31 316 267291

Niederlande ☐ +31 6 53150283

Switzerland ☎ +41 625880164

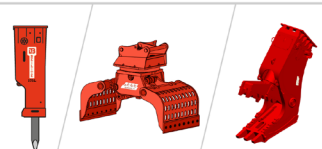
Schweiz ☐ +41 793649583

✉ info@acde-europe.com

🌐 www.acde-europe.com



ADVANCED CONSTRUCTION & DEMOLITION EQUIPMENT



Press Release: Advanced Recycling Solutions with ACDE® Europe

Efficient Material Recovery with the Right Hydraulic Attachments

The construction and demolition industries generate millions of tons of waste materials every year, making efficient recycling and material separation a key priority. ACDE® Europe provide a complete range of hydraulic attachments designed to optimize the recycling process—from sorting and separation to crushing and material recovery.

With the ASG-Series sorting grapples, ASS-Series scrap shears, ACC-Series concrete crushers, ASC-Series hydraulic pulverizers, AT-Series combination shears, and AHM-Series hydraulic magnets, recycling operators have the right tools for every stage of material processing.

ASG-Series Sorting Grapples: The First Step in Recycling

Efficient separation of mixed demolition debris is crucial for reducing waste and maximizing material recovery. The ACDE® Europe ASG-Series sorting and demolition grapples provide:

- High clamping force and precise control, ensuring efficient sorting of wood, metal, and concrete.
- Heavy-duty construction, capable of handling mixed demolition debris.
- 360-degree rotation, allowing precise placement of materials into designated containers.

Sorting materials directly at the demolition site saves time and improves processing efficiency at recycling terminals.

ASS-Series Scrap Shears: High-Performance Steel Processing

For cutting and downsizing scrap metal, including steel beams, pipes, and rebar, the ACDE® Europe ASS-Series scrap shears offer:

- Extreme cutting force for thick steel structures.
- Heavy-duty blades and reinforced design for long service life.
- Optimized geometry for fast and precise cutting cycles, increasing productivity.

These shears are ideal for scrapyards, vehicle recycling, and metal processing plants, ensuring efficient preparation of ferrous and non-ferrous materials for further refinement.

ACC-Series Concrete Crushers: Breaking Down Reinforced Structures

The ACDE® Europe ACC-Series hydraulic concrete crushers provide efficient concrete reduction and rebar separation in recycling applications. Key features include:

- High crushing force, capable of breaking down reinforced concrete elements.
- Integrated steel cutting blades, allowing simultaneous concrete crushing and metal separation.
- Speed valve technology, increasing cycle efficiency and reducing fuel consumption.

By processing concrete waste into reusable aggregates, the ACC-Series supports sustainable construction practices.

ASC-Series Hydraulic Pulverizers: Maximizing Concrete Recycling

Designed for processing reinforced concrete and heavy demolition waste, the ACDE® Europe ASC-Series hydraulic pulverizers offer:

- Efficient crushing power, reducing large concrete structures into smaller, manageable pieces.
- Built-in speed valve, improving cycle times and increasing efficiency.
- Integrated magnet on the ASC-1750-2M model, allowing automatic rebar separation directly on-site.

These pulverizers enable contractors and recycling facilities to recover clean steel while reducing concrete waste for reuse in construction projects.

AT-Series Combination Shears: Versatility in Metal and Concrete Demolition

For multi-purpose demolition and recycling applications, the ACDE® Europe AT-Series combination shears provide:

- Powerful cutting and crushing functions in one tool.
- Interchangeable jaws, allowing adaptation for metal shearing or concrete processing.
- Heavy-duty construction, ensuring high durability in demanding applications.

This flexibility makes the AT-Series a key tool for industrial demolition and material recycling operations.

AHM-Series Hydraulic Magnets: Efficient Metal Recovery Without External Power

The ACDE® Europe AHM-Series hydraulic magnets play a crucial role in separating ferrous materials from mixed demolition debris, featuring:

- Hydraulic operation – no external electricity required, ensuring seamless integration with excavators.
- Quick installation, adaptable to different excavator sizes for maximum versatility.
- Powerful magnetic force, allowing efficient lifting and sorting of steel and other metals.
- Robust and wear-resistant design, ensuring long operational life even in demanding conditions.

The AHM-Series hydraulic magnets enhance scrap processing efficiency while reducing contamination in recycled materials, making them an essential tool for demolition, recycling, and metal recovery applications.

Complete Recycling Solutions for a Circular Economy

By combining ASG-Series sorting grapples, ASS-Series scrap shears, ACC-Series concrete crushers, ASC-Series hydraulic pulverizers, AT-Series combination shears, and AHM-Series hydraulic magnets, ACDE® Europe provides a complete range of tools for efficient recycling operations.

This comprehensive approach enables:

- On-site separation and processing, reducing waste and transport costs.
- Higher material recovery rates, improving the efficiency of recycling terminals.
- Sustainable resource management, ensuring concrete, steel, and other materials are reused.

See Our Innovations at BAUMA 2025

Visit ACDE® Europe & BEILITE® Europe at BAUMA 2025, Halle C5, Stand C5.348, to explore our latest recycling technology. Our experts will be available to discuss how our attachments can improve material recovery and reduce waste.



ACDE® Europe

Netherlands ☎ +31 316 267291

Niederlande ☐ +31 6 53150283

Switzerland ☎ +41 625880164

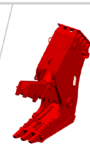
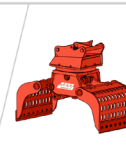
Schweiz ☐ +41 793649583

✉ info@acde-europe.com

🌐 www.acde-europe.com



ADVANCED CONSTRUCTION & DEMOLITION EQUIPMENT



Press Release: Innovative Solutions for River Restoration, Flood Protection, and Forestry Management

Environmental protection and sustainable land management require specialized equipment to handle tasks such as dike construction, flood protection, forestry operations, and riverbank restoration. Whether reinforcing landscapes, stabilizing waterways, or managing timber, ACDE® Europe and BEILITE® Europe provide a full range of hydraulic attachments designed to meet the needs of contractors working in environmentally sensitive areas. With the BLTB-5 Series hydraulic breakers, ASB-Series log grapples, ASB-7T heavy-duty log grapples, and ARG-Series rock grapples, operators have the right tools to efficiently and responsibly manage natural landscapes and infrastructure projects.

BLTB-5 Series Hydraulic Breakers: Versatility for Environmental Construction

Hydraulic hammers are widely used in landscaping, forestry, and infrastructure reinforcement. The BEILITE® Europe BLTB-5 Series hydraulic breakers provide:

- Efficient rock breaking for landscaping, dike reinforcement, and riverbank stabilization.
- Controlled excavation, reducing the need for explosives in environmentally sensitive areas.
- Sound-suppressed models, minimizing noise pollution near residential areas and nature reserves.
- B@BI-LUBE automatic greasing system (standard from BLTB-175L-5-W) for longer service life and minimal maintenance.
- Fencing and pile driving capabilities, making them ideal for post installation, guardrail placement, and foundation support.

These breakers provide an essential tool for flood protection, road infrastructure, and riverbank reinforcement projects.

ASB-Series and ASB-7T Log Grapples: Essential for Forestry and Riverbank Restoration

Efficient wood handling is crucial for forestry operations, flood prevention, and post-storm cleanup. The ACDE® Europe ASB-Series log grapples provide:

- Secure clamping force, ensuring precise handling of logs, tree trunks, and driftwood.
- Heavy-duty steel construction, built for continuous use in demanding forestry applications.
- 360-degree rotation, allowing precise placement of logs and timber.

These grapples are indispensable for forestry work, riverbank stabilization, and dike reinforcement projects.

ARG-Series Rock Grapples: Precision in River and Dike Construction

For projects involving boulders, riprap placement, and land reinforcement, the ACDE® Europe ARG-Series rock grapples provide:

- High clamping force, enabling secure handling of large stones in river and dike reinforcement projects.
- Wear-resistant materials, ensuring longevity in abrasive environments.
- Optimized kinematics, allowing controlled placement of natural materials.

The ARG-Series plays a key role in flood protection and erosion control, ensuring the stability of waterways, riverbanks, and coastal areas.

Complete Solutions for Environmental Protection and Forestry

By combining BLTB-5 Series hydraulic breakers, ASB-Series log grapples, ASB-7T heavy-duty log grapples, and ARG-Series rock grapples, ACDE® Europe offers a full suite of tools for:

- Forestry and timber handling – Efficient logging, riverbank clearance, and sustainable forest management.
- Dike and flood protection – Strengthening waterways, stabilizing slopes, and reinforcing flood barriers.
- River and coastal restoration – Placing large rocks, handling driftwood, and improving erosion control.
- Landscaping and infrastructure support – Pile driving, fencing, and foundation work.

These robust and efficient attachments help contractors carry out environmentally responsible projects while maximizing productivity.

See Our Innovations at BAUMA 2025

Visit ACDE® Europe & BEILITE® Europe at BAUMA 2025, Halle C5, Stand C5.348, to explore our latest forestry, flood protection, and environmental restoration technology. Our team will be available to discuss how our attachments can support your projects.



ACDE® Europe

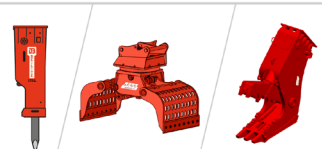
Netherlands ☎ +31 316 267291
Niederlande ☐ +31 6 53150283

Switzerland ☎ +41 625880164
Schweiz ☐ +41 793649583

✉ info@acde-europe.com
🌐 www.acde-europe.com



ADVANCED CONSTRUCTION & DEMOLITION EQUIPMENT



Press Release: Slag Removal in Smelters with BEILITE® Europe Hydraulic Hammers

Optimized Equipment for High-Temperature Smelting Operations

In steel production, the removal of slag from blast furnaces is an essential process that demands specialized, heat-resistant equipment. Extreme temperatures, molten metal residues, and aggressive operating conditions pose significant challenges, requiring robust and high-performance hydraulic attachments. BEILITE® Europe's BLTB-5 Series hydraulic hammers and ACDE® Europe's AMG Series multi-grapples provide an efficient, durable, and industry-proven solution for these demanding applications.

Hydraulic Hammers Designed for High-Temperature Applications

For slag removal and breakout operations, BEILITE® Europe offers models from BLTB-85-5 and above, specifically engineered for high-temperature environments. These hammers incorporate:

- Fully enclosed, sound-suppressed housing with water circulation cooling to prevent overheating in extreme smelting conditions.
- Water cooling system consisting of a tank, pump, pipe network, and radiator to regulate operating temperatures.
- Iron plugs replacing all rubber components, eliminating the risk of heat damage.
- Modified oil pipes and hoses, switching from standard rubber to heat-resistant mount caps, reducing fire hazards and increasing longevity.

These features ensure safe and efficient slag removal while extending the operational life of both the hammer and surrounding equipment.

Precision Handling with AMG Series Multi-Grapples

Once slag is broken out and cooled, controlled removal is crucial for maintaining efficient furnace operations. The AMG Series multi-grapples provide optimized handling and transport of slag and other heavy materials, thanks to:

- Lightweight yet robust construction, ensuring optimal force distribution.
- Short overall height, allowing for operation in confined spaces.
- Motionless cylinders with end damping, reducing wear and increasing longevity.
- Wear-resistant steel and chromed, hardened pins, designed for heavy-duty applications.
- Kinematic link design for maximum pinching power.
- Reversible and replaceable wear blades, enhancing durability and efficiency.
- Closed slewing ring with grease bed, improving reliability in high-temperature environments.

Additionally, optional side plates allow the AMG Series grapple to function as a two-shell grab, making it possible to handle bulk materials like sand, gravel, or pebbles—further extending its versatility in industrial settings.

The combination of BEILITE® Europe hydraulic hammers and ACDE® Europe multi-grapples provides a comprehensive solution for smelters, steel mills, and foundries, offering:

- Efficient slag removal after tapping processes.
- Reduction of furnace downtime by streamlining cleanup operations.
- Minimized manual labor and improved workplace safety.

With their proven durability and specialized design for extreme conditions, these attachments are an essential addition to modern steel production and smelting operations.

See the Latest Innovations at BAUMA 2025

BEILITE® Europe and ACDE® Europe will showcase these advanced solutions at BAUMA 2025 in Halle C5, Stand C5.348. Visitors will have the opportunity to explore the BLTB-5 Series hydraulic hammers and AMG Series grapples, along with other innovations designed for the most demanding industries.



ACDE® Europe

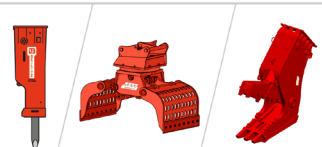
Netherlands ☎ +31 316 267291
Niederlande ☐ +31 6 53150283

Switzerland ☎ +41 625880164
Schweiz ☐ +41 793649583

✉ info@acde-europe.com
🌐 www.acde-europe.com



ADVANCED CONSTRUCTION & DEMOLITION EQUIPMENT



Press Release: Digitalizing Hydraulic Attachments with B®TRACK&CHECK Data Tracking

Optimizing Performance, Maintenance, and Security in Heavy Equipment

In today's construction, demolition, mining, and recycling industries, digitalization is no longer optional—it's essential. Equipment monitoring and data analysis are now key factors in maximizing productivity, efficiency, and lifespan. While modern construction machinery has embraced digital tracking, hydraulic attachments have often been overlooked—until now.

With B®TRACK&CHECK, ACDE® Europe and BEILITE® Europe introduce a cutting-edge data tracking system designed for hydraulic hammers and attachments, providing real-time insights into equipment performance, maintenance needs, and usage patterns.

B®TRACK&CHECK: The Smart Way to Monitor Attachments

B®TRACK&CHECK is a wireless IoT-based data tracking system that enables equipment owners and operators to:

- Track running hours and usage patterns – Optimize maintenance schedules and extend tool lifespan.
- Monitor vibration levels and operating intensity – Identify overuse or improper operation to prevent damage.
- Improve maintenance planning with predictive alerts – Get notified when service is needed, reducing downtime and unexpected failures.
- Enhance fleet management and tool allocation – Ensure even utilization across multiple attachments.
- Increase security with location tracking – Minimize the risk of theft or unauthorized use.

The system collects real-time data and transmits it via mobile networks, allowing managers to access and analyze critical information from any location.

Durable and Reliable: Built for Extreme Conditions

Unlike traditional machine monitoring systems, B®TRACK&CHECK is specifically designed for hydraulic attachments, meaning it must withstand:

- Extreme vibrations from hydraulic breakers, pulverizers, and shears.
- Harsh environments, including dust, mud, and high-impact conditions.
- Severe weather conditions, ensuring reliable operation in all climates.

B®TRACK&CHECK is equipped with a highly durable, fully sealed housing (IP69K rated), making it resistant to shock, water, and dust. Its advanced accelerometer sensors detect even the slightest movements, providing accurate tracking of real working hours—not just engine hours.

Key Benefits of Digitalizing Hydraulic Attachments

By integrating B®TRACK&CHECK, operators and fleet managers gain unprecedented control over their attachments, leading to:

- Reduced downtime – Know when maintenance is due before a failure occurs.
 - Optimized operational efficiency – Balance usage across multiple attachments to prevent excessive wear.
 - Extended equipment lifespan – Ensure timely servicing and correct usage.
 - Cost savings – Avoid unnecessary repairs and maximize return on investment.
 - Improved security – Track the location of valuable hydraulic attachments, reducing theft risks.
- The system can also be integrated with fleet management platforms, allowing centralized monitoring of all equipment in one place.

A Smarter Future for Hydraulic Attachments

As the industry shifts toward data-driven decision-making, ACDE® Europe and BEILITE® Europe are at the forefront of bringing digitalization to hydraulic attachments. B®TRACK&CHECK is the next step in ensuring efficiency, reliability, and sustainability in the construction and demolition sectors.

By monitoring performance, predicting maintenance needs, and reducing unexpected downtime, contractors and fleet managers can maximize the value of their hydraulic attachments—just as they already do with their machines.

See B®TRACK&CHECK in Action at BAUMA 2025

Join us at BAUMA 2025, Halle C5, Stand C5.348, where ACDE® Europe and BEILITE® Europe will showcase B®TRACK&CHECK in real-time, along with our latest hydraulic hammers and attachments.

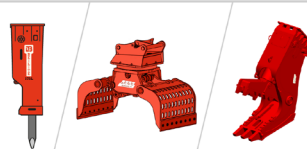


ACDE® Europe
Netherlands ☎ +31 316 267291
Niederlande ☐ +31 6 53150283
Switzerland ☎ +41 625880164
Schweiz ☐ +41 793649583

✉ info@acde-europe.com
🌐 www.acde-europe.com



ADVANCED CONSTRUCTION & DEMOLITION EQUIPMENT





BEILITE® Europe BLTB-5-SERIE
Hydraulic Hammer | Hydraulikhammer
for Excavators from 0.5 ~ 200 t | für Bagger 0.5 ~ 200 t



bauma
APRIL 7-13, 2025, MUNICH
BOOTH C5.348

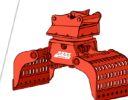


ACDE® Europe
Netherlands ☎ +31 316 267291
Niederlande ☐ +31 6 53150283
Switzerland ☎ +41 625880164
Schweiz ☐ +41 793649583

✉ info@acde-europe.com
🌐 www.acde-europe.com



ADVANCED CONSTRUCTION & DEMOLITION EQUIPMENT





BEILITE® Europe BLTB-5-SERIE
Hydraulic Hammer | Hydraulikhammer
for Excavators from 0.5 ~ 200 t | für Bagger 0.5 ~ 200 t



bauma

APRIL 7-13, 2025, MUNICH

BOOTH C5.348



ACDE® Europe

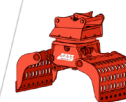
Netherlands ☎ +31 316 267291
Niederlande ☐ +31 6 53150283

Switzerland ☎ +41 625880164
Schweiz ☐ +41 793649583

✉ info@acde-europe.com
🌐 www.acde-europe.com



ADVANCED CONSTRUCTION & DEMOLITION EQUIPMENT



A/C/D/E
EUROPE ®

BEILITE® Europe B®TRACK&CHECK

LB
BEILITE® EUROPE

bauma

APRIL 7-13, 2025, MUNICH

BOOTH C5.348



ACDE® Europe

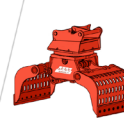
Netherlands ☎ +31 316 267291
Niederlande ☐ +31 6 53150283

Switzerland ☎ +41 625880164
Schweiz ☐ +41 793649583

✉ info@acde-europe.com
🌐 www.acde-europe.com



ADVANCED CONSTRUCTION & DEMOLITION EQUIPMENT



A/C/D/E
EUROPE ®

BEILITE® Europe B®TRACK&CHECK

LB
BEILITE® EUROPE

bauma
APRIL 7-13, 2025, MUNICH
BOOTH C5.348

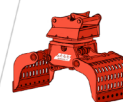


ACDE® Europe
Netherlands ☎ +31 316 267291
Niederlande ☐ +31 6 53150283
Switzerland ☎ +41 625880164
Schweiz ☐ +41 793649583

✉ info@acde-europe.com
🌐 www.acde-europe.com



ADVANCED CONSTRUCTION & DEMOLITION EQUIPMENT





ACDE® Europe ASG-SERIE
Demolition Grapple | Abbruchgreifer
for Excavators from 0.7 ~ 50 t | für Bagger mit 0.7 ~ 50 t



bauma

APRIL 7-13, 2025, MUNICH

BOOTH C5.348



ACDE® Europe

Netherlands ☎ +31 316 267291

Niederlande ☐ +31 6 53150283

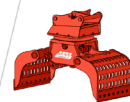
Switzerland ☎ +41 625880164

Schweiz ☐ +41 793649583

✉ info@acde-europe.com
www.acde-europe.com



ADVANCED CONSTRUCTION & DEMOLITION EQUIPMENT





BEILITE® Europe BLTB-5-SERIE
Hydraulic Hammer | Hydraulikhammer
for Excavators from 0.5 ~ 200 t | für Bagger 0.5 ~ 200 t



ACDE® Europe

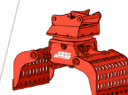
Netherlands ☎ +31 316 267291
Niederlande ☐ +31 6 53150283

Switzerland ☎ +41 625880164
Schweiz ☐ +41 793649583

✉ info@acde-europe.com
🌐 www.acde-europe.com



ADVANCED CONSTRUCTION & DEMOLITION EQUIPMENT





ACDE® Europe ARG-SERIE
Stone Grapple | Steingreifer
for Excavators from 17 ~ 100 t | für Bagger mit 17 ~ 100 t

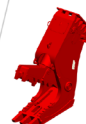
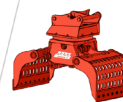


ACDE® Europe
Netherlands ☎ +31 316 267291
Niederlande ☐ +31 6 53150283
Switzerland ☎ +41 625880164
Schweiz ☐ +41 793649583

✉ info@acde-europe.com
🌐 www.acde-europe.com



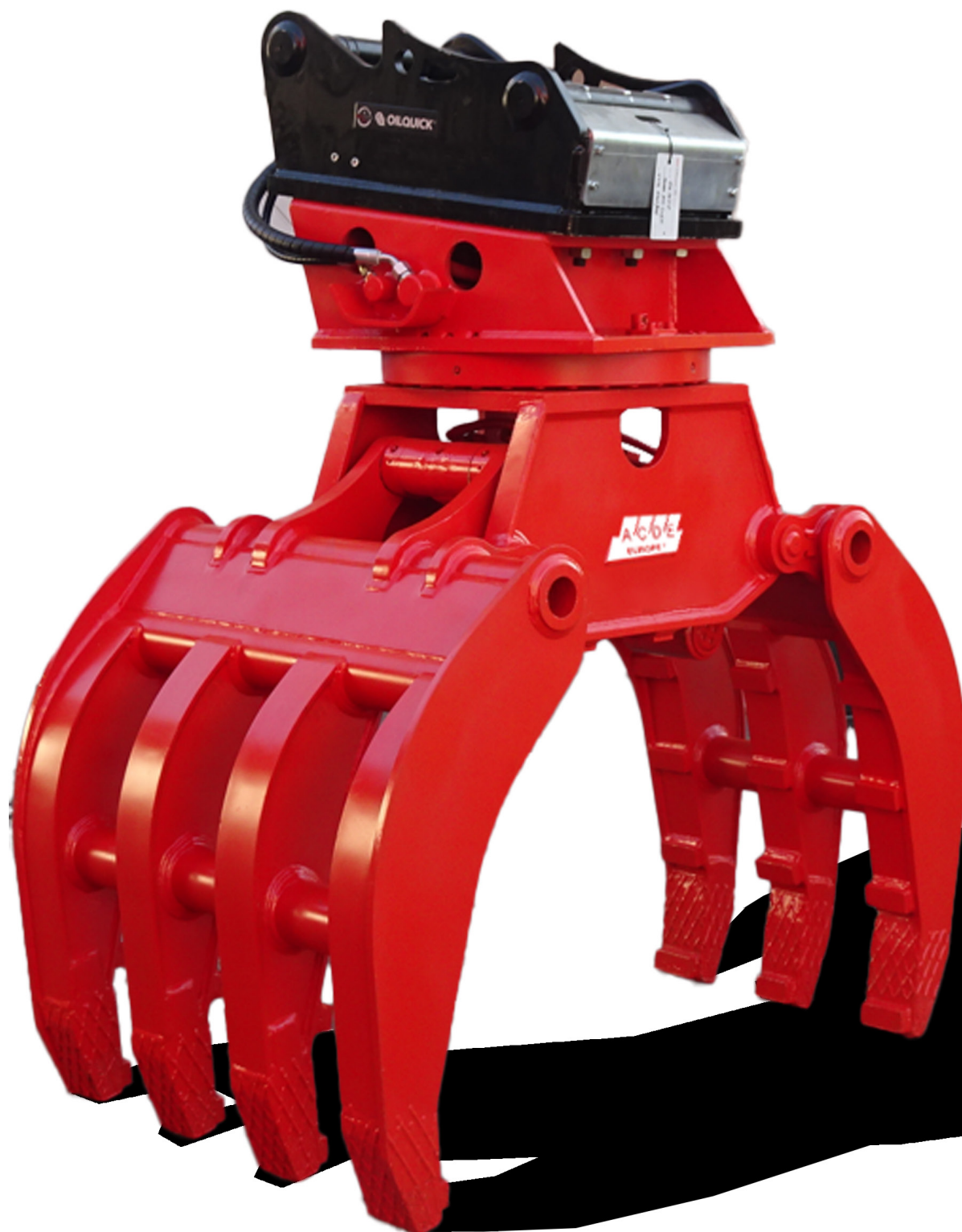
ADVANCED CONSTRUCTION & DEMOLITION EQUIPMENT



ACDE
EUROPE®

ACDE® Europe ARG-SERIE
Stone Grapple | Steingreifer
for Excavators from 17 ~ 100 t | für Bagger mit 17 ~ 100 t

LB
BETRIEBSGRUPPE



ACDE® Europe

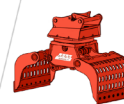
Netherlands ☎ +31 316 267291
Niederlande ☐ +31 6 53150283

Switzerland ☎ +41 625880164
Schweiz ☐ +41 793649583

✉ info@acde-europe.com
🌐 www.acde-europe.com



ADVANCED CONSTRUCTION & DEMOLITION EQUIPMENT





ACDE® Europe ASB-7T-SERIE
Rotating 7 Teeth Log Grapple | Drehbare 7 Zahn Baumgreifer
for Excavators from 1.5 ~ 38 t | für Bagger mit 1.5 ~ 38 t

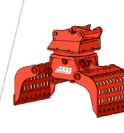


ACDE® Europe
Netherlands ☎ +31 316 267291
Niederlande ☐ +31 6 53150283
Switzerland ☎ +41 625880164
Schweiz ☐ +41 793649583

✉ info@acde-europe.com
🌐 www.acde-europe.com



ADVANCED CONSTRUCTION & DEMOLITION EQUIPMENT





ACDE® Europe ASG-SERIE
Demolition Grapple | Abbruchgreifer
for Excavators from 0.7 ~ 50 t | für Bagger mit 0.7 ~ 50 t



bauma

APRIL 7-13, 2025, MUNICH

BOOTH C5.348



ACDE® Europe

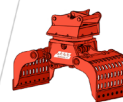
Netherlands ☎ +31 316 267291
Niederlande ☐ +31 6 53150283

Switzerland ☎ +41 625880164
Schweiz ☐ +41 793649583

✉ info@acde-europe.com
🌐 www.acde-europe.com



ADVANCED CONSTRUCTION & DEMOLITION EQUIPMENT

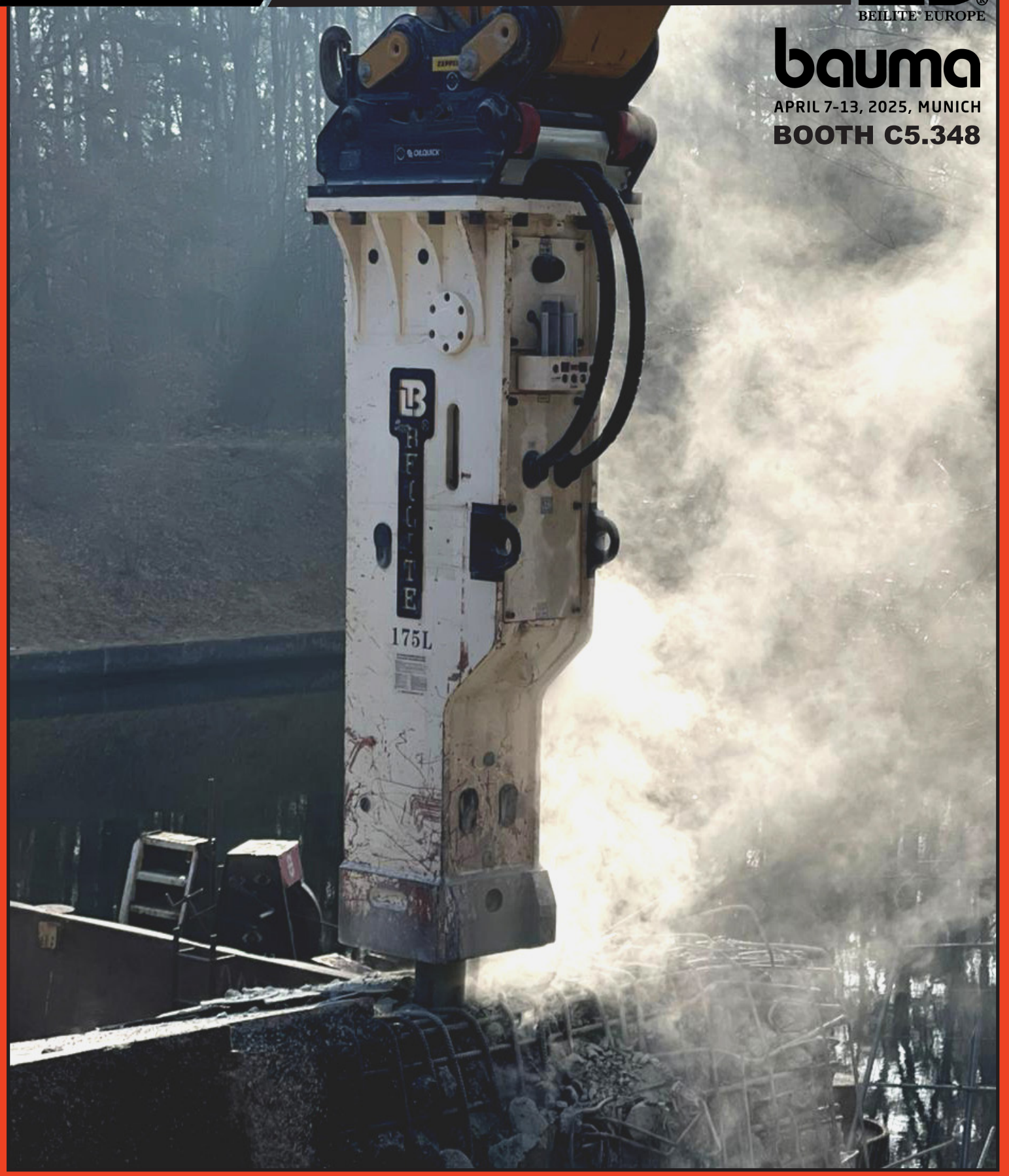




BEILITE® Europe BLTB-5-SERIE
Hydraulic Hammer | Hydraulikhammer
for Excavators from 0.5 ~ 200 t | für Bagger 0.5 ~ 200 t



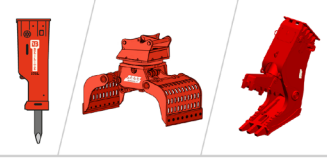
bauma
APRIL 7-13, 2025, MUNICH
BOOTH C5.348



ACDE® Europe
Netherlands ☎ +31 316 267291
Niederlande ☐ +31 6 53150283
Switzerland ☎ +41 625880164
Schweiz ☐ +41 793649583
info@acde-europe.com
www.acde-europe.com



ADVANCED CONSTRUCTION & DEMOLITION EQUIPMENT





ACDE® Europe ASC-SERIE
Hydraulic Pulverizer | Hydraulische Pulverisierer
for Excavators from 3 ~ 100 t | für Bagger mit 3 ~ 100 t



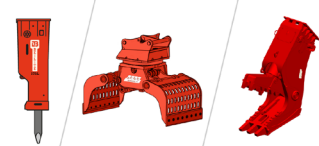
bauma
APRIL 7-13, 2025, MUNICH
BOOTH C5.348



ACDE® Europe
Netherlands ☎ +31 316 267291
Niederlande ☐ +31 6 53150283
Switzerland ☎ +41 625880164
Schweiz ☐ +41 793649583
info@acde-europe.com
www.acde-europe.com



ADVANCED CONSTRUCTION & DEMOLITION EQUIPMENT





BEILITE® Europe BLTB-5-SERIE
Hydraulic Hammer | Hydraulikhammer
for Excavators from 0.5 ~ 200 t | für Bagger 0.5 ~ 200 t



bauma

APRIL 7-13, 2025, MUNICH

BOOTH C5.348



ACDE® Europe

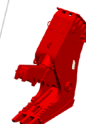
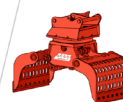
Netherlands ☎ +31 316 267291
Niederlande ☐ +31 6 53150283

Switzerland ☎ +41 625880164
Schweiz ☐ +41 793649583

✉ info@acde-europe.com
🌐 www.acde-europe.com



ADVANCED CONSTRUCTION & DEMOLITION EQUIPMENT





BEILITE® Europe BLTB-5-SERIE
Hydraulic Hammer | Hydraulikhammer
for Excavators from 0.5 ~ 200 t | für Bagger 0.5 ~ 200 t



bauma

APRIL 7-13, 2025, MUNICH
BOOTH C5.348



ACDE® Europe

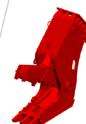
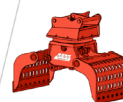
Netherlands ☎ +31 316 267291
Niederlande ☐ +31 6 53150283

Switzerland ☎ +41 625880164
Schweiz ☐ +41 793649583

✉ info@acde-europe.com
🌐 www.acde-europe.com



ADVANCED CONSTRUCTION & DEMOLITION EQUIPMENT



ACDE
EUROPE®

BEILITE® Europe BLTB-5-SERIE
Hydraulic Hammer | Hydraulikhammer
for Excavators from 0.5 ~ 200 t | für Bagger 0.5 ~ 200 t

LB
BEILITE® EUROPE

bauma

APRIL 7-13, 2025, MUNICH

BOOTH C5.348



ACDE
EUROPE®

ACDE® Europe

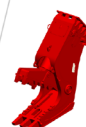
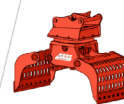
Netherlands ☎ +31 316 267291
Niederlande ☐ +31 6 53150283

Switzerland ☎ +41 625880164
Schweiz ☐ +41 793649583

✉ info@acde-europe.com
🌐 www.acde-europe.com

DA **EDA**
DEMOLITION
ASSOCIATION

ADVANCED CONSTRUCTION & DEMOLITION EQUIPMENT





ACDE® Europe AHM-SERIE
Hydraulic Magnet | Hydraulik - Magnet
for Excavators from 22 ~ 40 t | für Bagger mit 22 ~ 40 t



ACDE® Europe

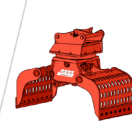
Netherlands ☎ +31 316 267291
Niederlande ☐ +31 6 53150283

Switzerland ☎ +41 625880164
Schweiz ☐ +41 793649583

✉ info@acde-europe.com
🌐 www.acde-europe.com



ADVANCED CONSTRUCTION & DEMOLITION EQUIPMENT





ACDE® Europe ASG-SERIE
Demolition Grapple | Abbruchgreifer
for Excavators from 0.7 ~ 50 t | für Bagger mit 0.7 ~ 50 t



ACDE® Europe

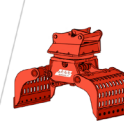
Netherlands ☎ +31 316 267291
Niederlande ☐ +31 6 53150283

Switzerland ☎ +41 625880164
Schweiz ☐ +41 793649583

✉ info@acde-europe.com
🌐 www.acde-europe.com

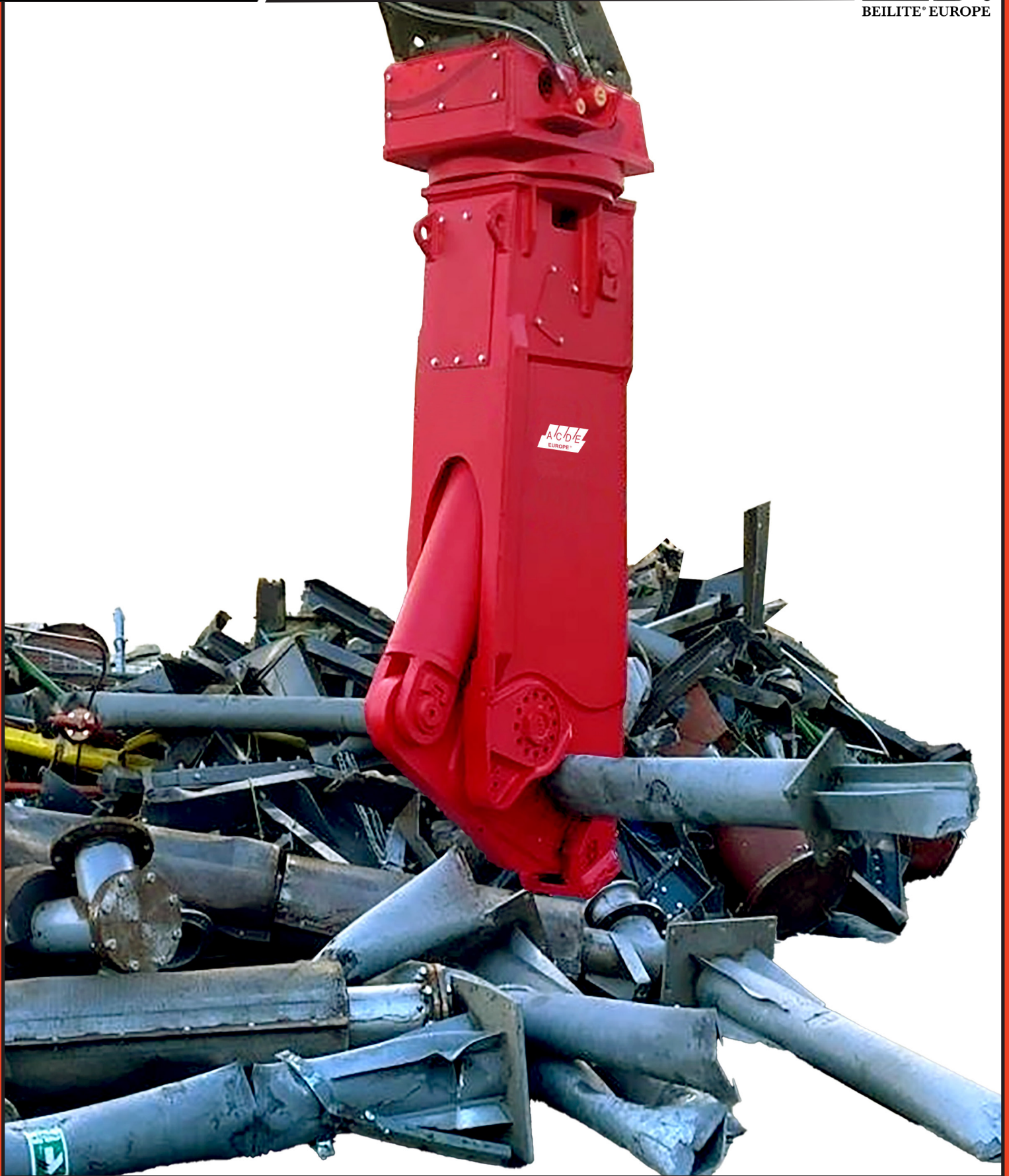


ADVANCED CONSTRUCTION & DEMOLITION EQUIPMENT





ACDE® Europe ASS-SERIE
Hydraulic Scrap Shear | Schrottscheren
for Excavators from 6 ~ 35 t | für Bagger mit 6 ~ 35 t



ACDE® Europe

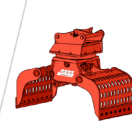
Netherlands ☎ +31 316 267291
Niederlande ☐ +31 6 53150283

Switzerland ☎ +41 625880164
Schweiz ☐ +41 793649583

✉ info@acde-europe.com
🌐 www.acde-europe.com



ADVANCED CONSTRUCTION & DEMOLITION EQUIPMENT





ACDE® Europe ASS-SERIE
Hydraulic Scrap Shear | Schrottscheren
for Excavators from 6 ~ 35 t | für Bagger mit 6 ~ 35 t



ACDE® Europe

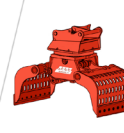
Netherlands ☎ +31 316 267291
Niederlande ☐ +31 6 53150283

Switzerland ☎ +41 625880164
Schweiz ☐ +41 793649583

✉ info@acde-europe.com
🌐 www.acde-europe.com

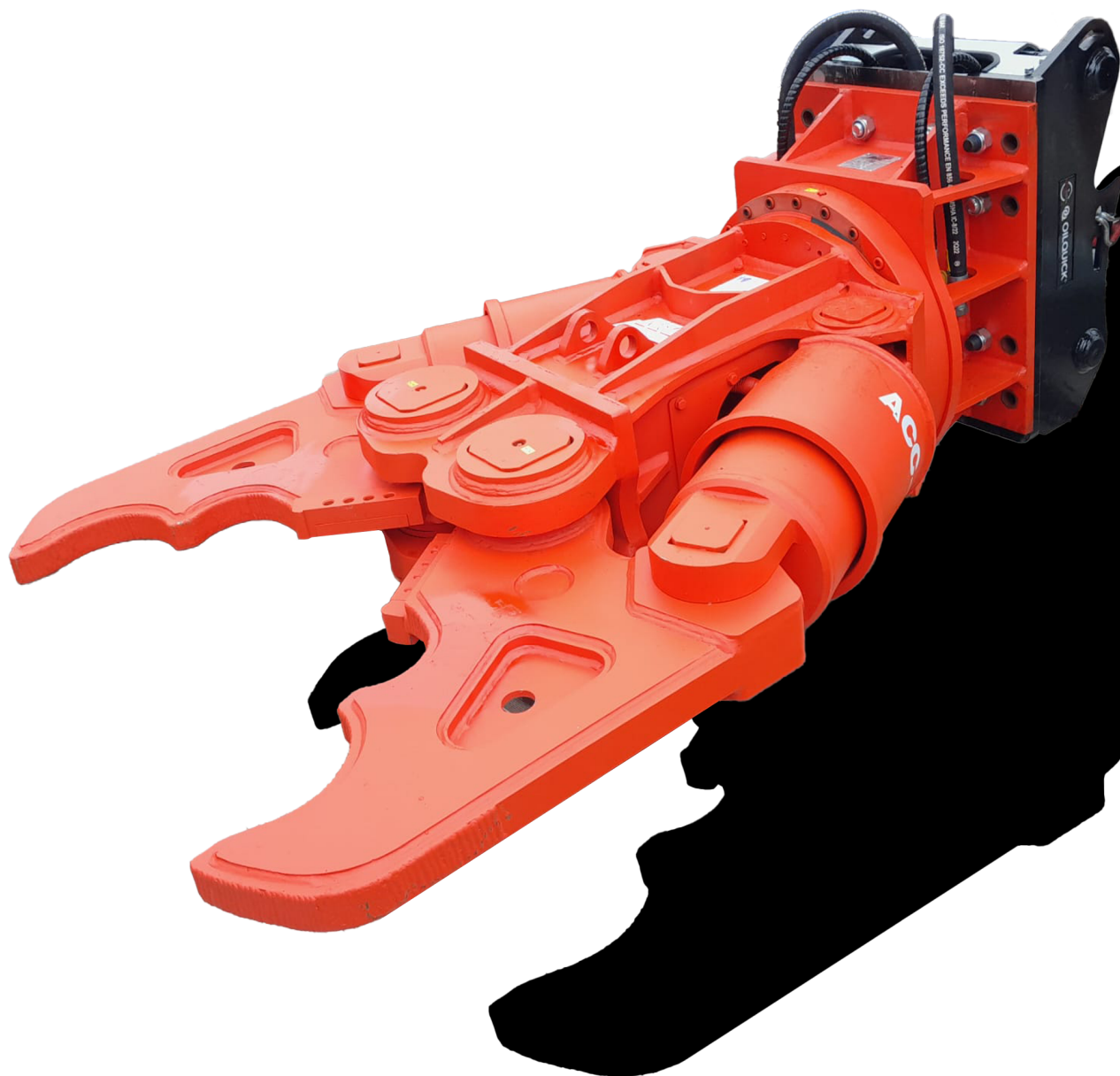


ADVANCED CONSTRUCTION & DEMOLITION EQUIPMENT





ACDE® Europe ACC-SERIE
Hydraulic Concrete Crusher | Hydraulische Betonzangen
for Excavators from 10 ~ 36 t | für Bagger mit 10 ~ 36 t



ACDE® Europe

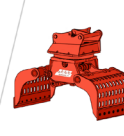
Netherlands ☎ +31 316 267291
Niederlande ☐ +31 6 53150283

Switzerland ☎ +41 625880164
Schweiz ☐ +41 793649583

✉ info@acde-europe.com
🌐 www.acde-europe.com

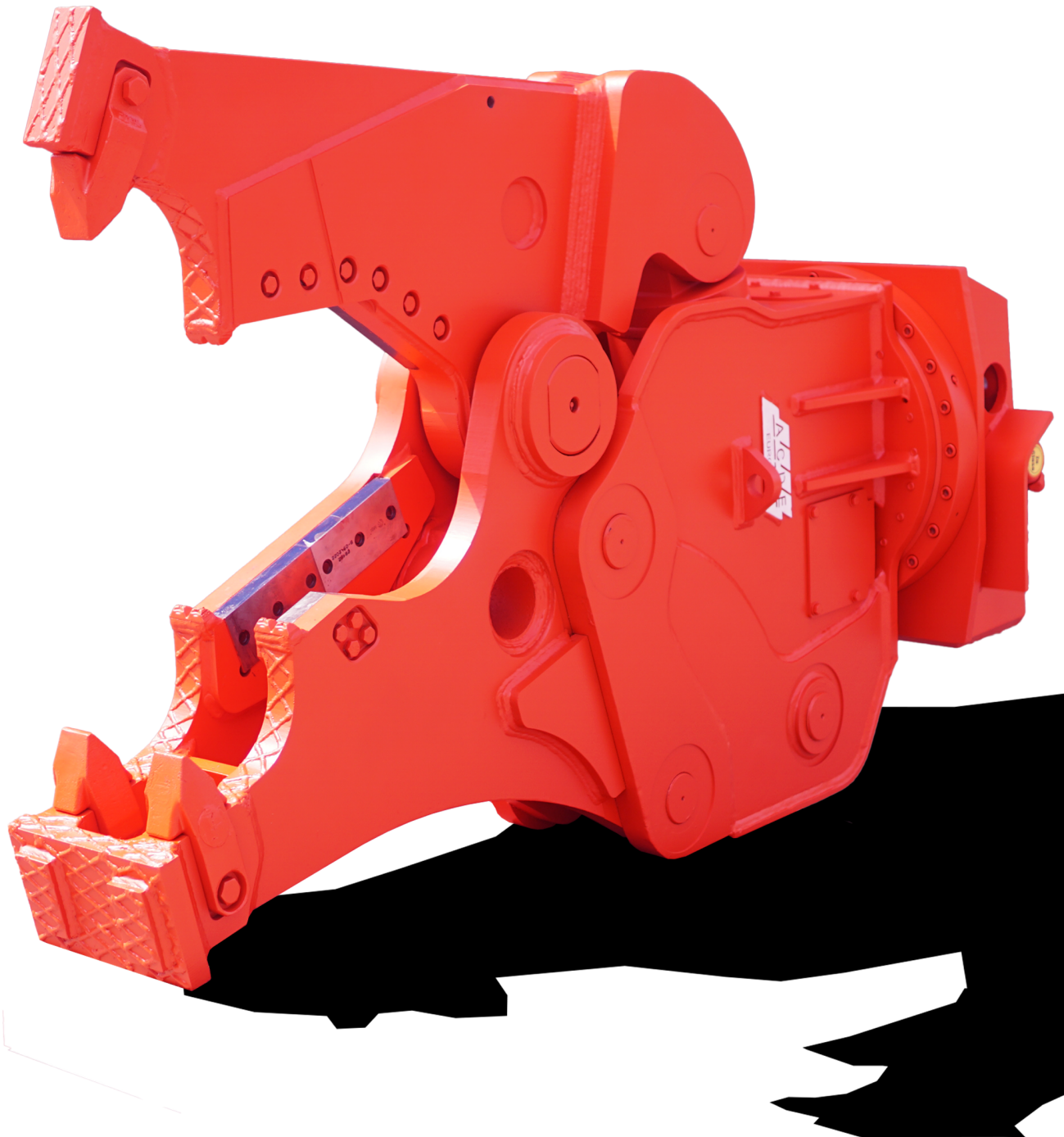


ADVANCED CONSTRUCTION & DEMOLITION EQUIPMENT





ACDE® Europe AT-SERIE
Combi Shear | Kombieschere
for Excavators from 20 ~ 30 t | für mit Bagger 20 ~ 30 t



ACDE® Europe

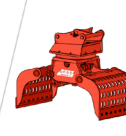
Netherlands ☎ +31 316 267291
Niederlande ☐ +31 6 53150283

Switzerland ☎ +41 625880164
Schweiz ☐ +41 793649583

✉ info@acde-europe.com
🌐 www.acde-europe.com



ADVANCED CONSTRUCTION & DEMOLITION EQUIPMENT





BEILITE® Europe BLTB-5-SERIE
Hydraulic Hammer | Hydraulikhammer
for Excavators from 0.5 ~ 200 t | für Bagger 0.5 ~ 200 t



bauma

APRIL 7-13, 2025, MUNICH

BOOTH C5.348



ACDE® Europe

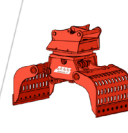
Netherlands ☎ +31 316 267291
Niederlande ☐ +31 6 53150283

Switzerland ☎ +41 625880164
Schweiz ☐ +41 793649583

✉ info@acde-europe.com
🌐 www.acde-europe.com



ADVANCED CONSTRUCTION & DEMOLITION EQUIPMENT





ACDE® Europe ASC-SERIE
Hydraulic Pulverizer | Hydraulische Pulverisierer
for Excavators from 3 ~ 100 t | für Bagger mit 3 ~ 100 t



bauma
APRIL 7-13, 2025, MUNICH
BOOTH C5.348

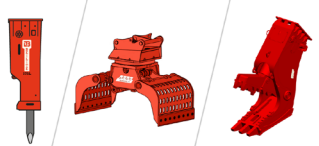


ACDE® Europe
Netherlands ☎ +31 316 267291
Niederlande ☐ +31 6 53150283
Switzerland ☎ +41 625880164
Schweiz ☐ +41 793649583

✉ info@acde-europe.com
🌐 www.acde-europe.com

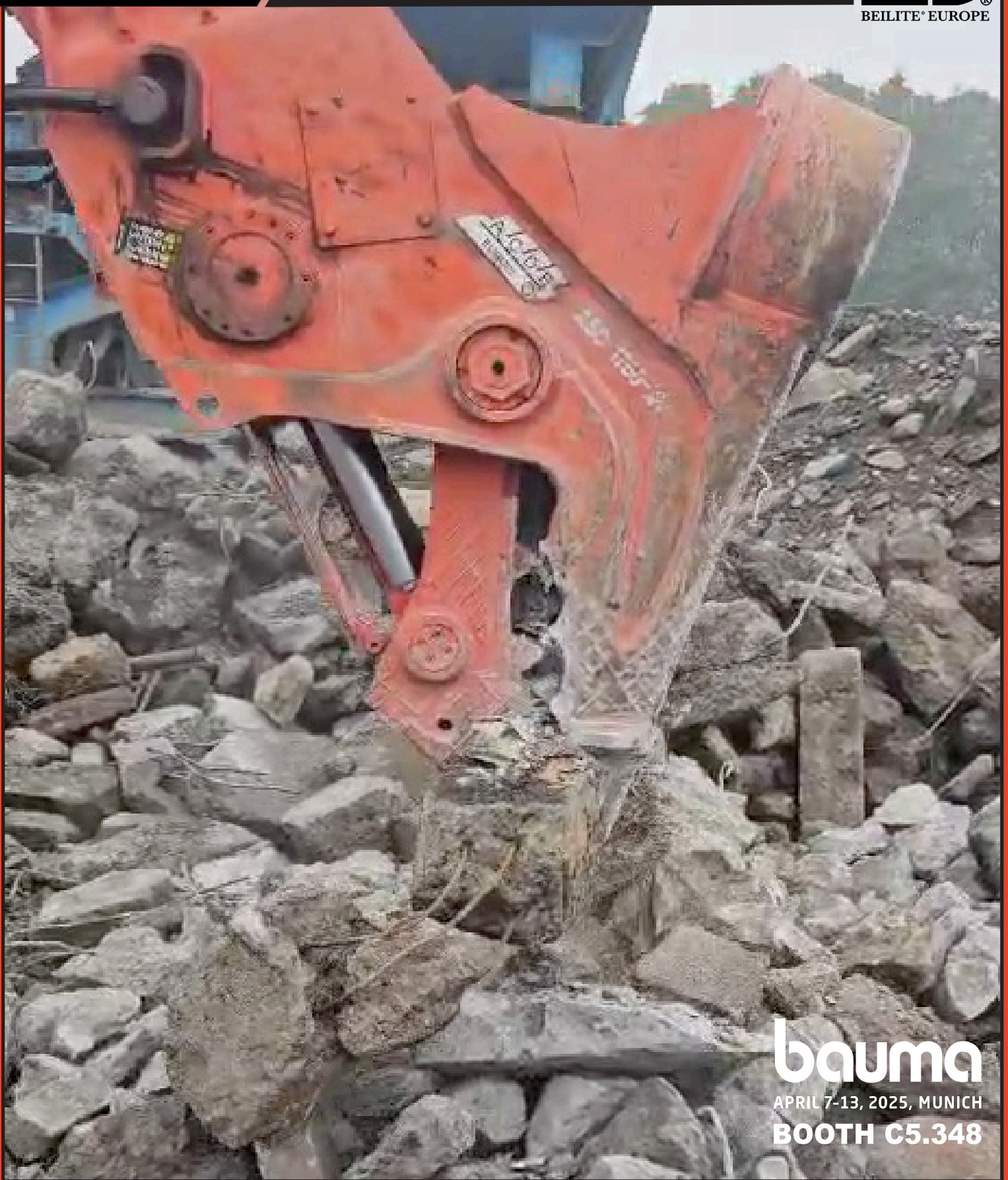


ADVANCED CONSTRUCTION & DEMOLITION EQUIPMENT





ACDE® Europe ASC-SERIE
Hydraulic Pulverizer | Hydraulische Pulverisierer
for Excavators from 3 ~ 100 t | für Bagger mit 3 ~ 100 t



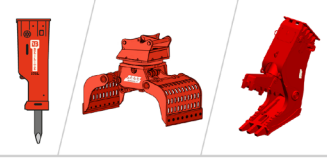
bauma
APRIL 7-13, 2025, MUNICH
BOOTH C5.348



ACDE® Europe
Netherlands ☎ +31 316 267291
Niederlande ☐ +31 6 53150283
Switzerland ☎ +41 625880164
Schweiz ☐ +41 793649583
✉ info@acde-europe.com
🌐 www.acde-europe.com



ADVANCED CONSTRUCTION & DEMOLITION EQUIPMENT





BEILITE® Europe BLTB-5-SERIE
Hydraulic Hammer | Hydraulikhammer
for Excavators from 0.5 ~ 200 t | für Bagger 0.5 ~ 200 t



bauma
APRIL 7-13, 2025, MUNICH
BOOTH C5.348



ACDE® Europe
Netherlands ☎ +31 316 267291
Niederlande ☐ +31 6 53150283
Switzerland ☎ +41 625880164
Schweiz ☐ +41 793649583

✉ info@acde-europe.com
🌐 www.acde-europe.com



ADVANCED CONSTRUCTION & DEMOLITION EQUIPMENT

