

OPERATING MANUAL

AUTO GREASE PUMP
Hydraulic Drive

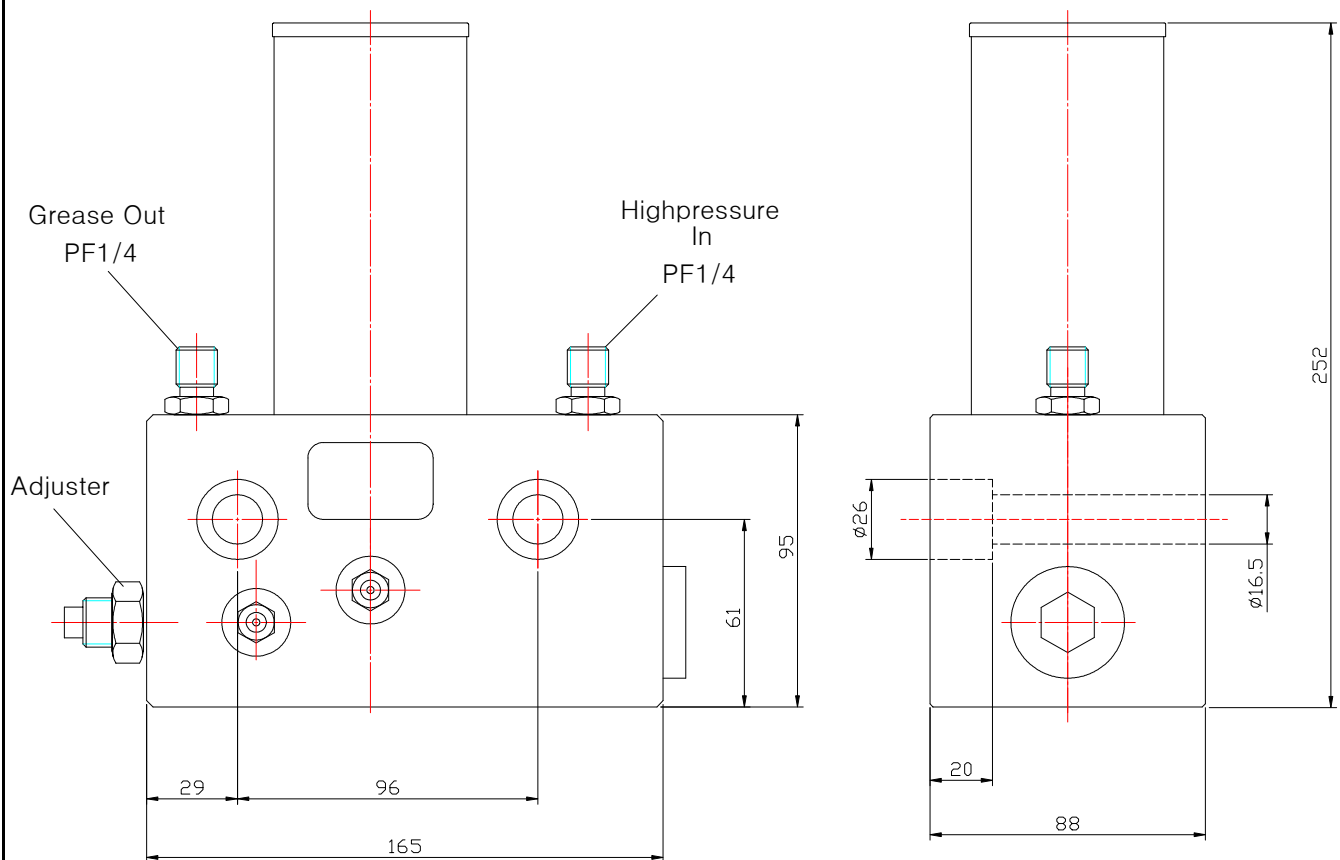
H2



Specification

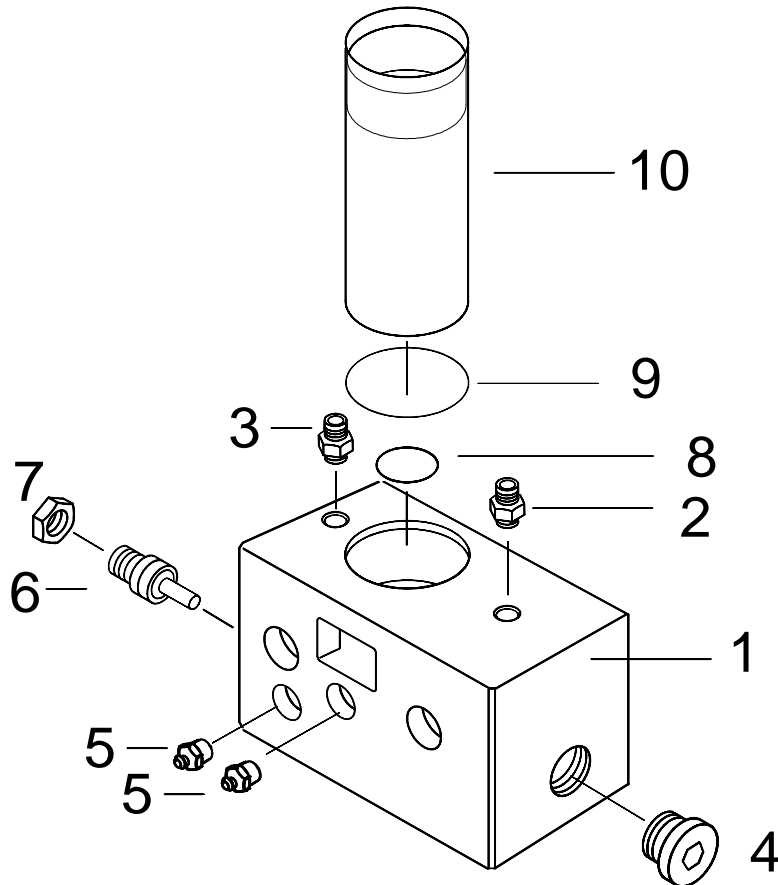
	2
Exterior Size	165 x 88 x 252
Weight	3.9 Kg
OutPut Pressure	120 bar
OutPut Port	PF 1/4"
Output Quantity	0.2cc ~ 1cc / 1min
	12cc ~ 60cc / 1hour
Available temp'	-10°C ~ 60°C

Adaptable Cartridge	Outside Diameter	Screw Diameter	Length
	62mm	20mm	180mm



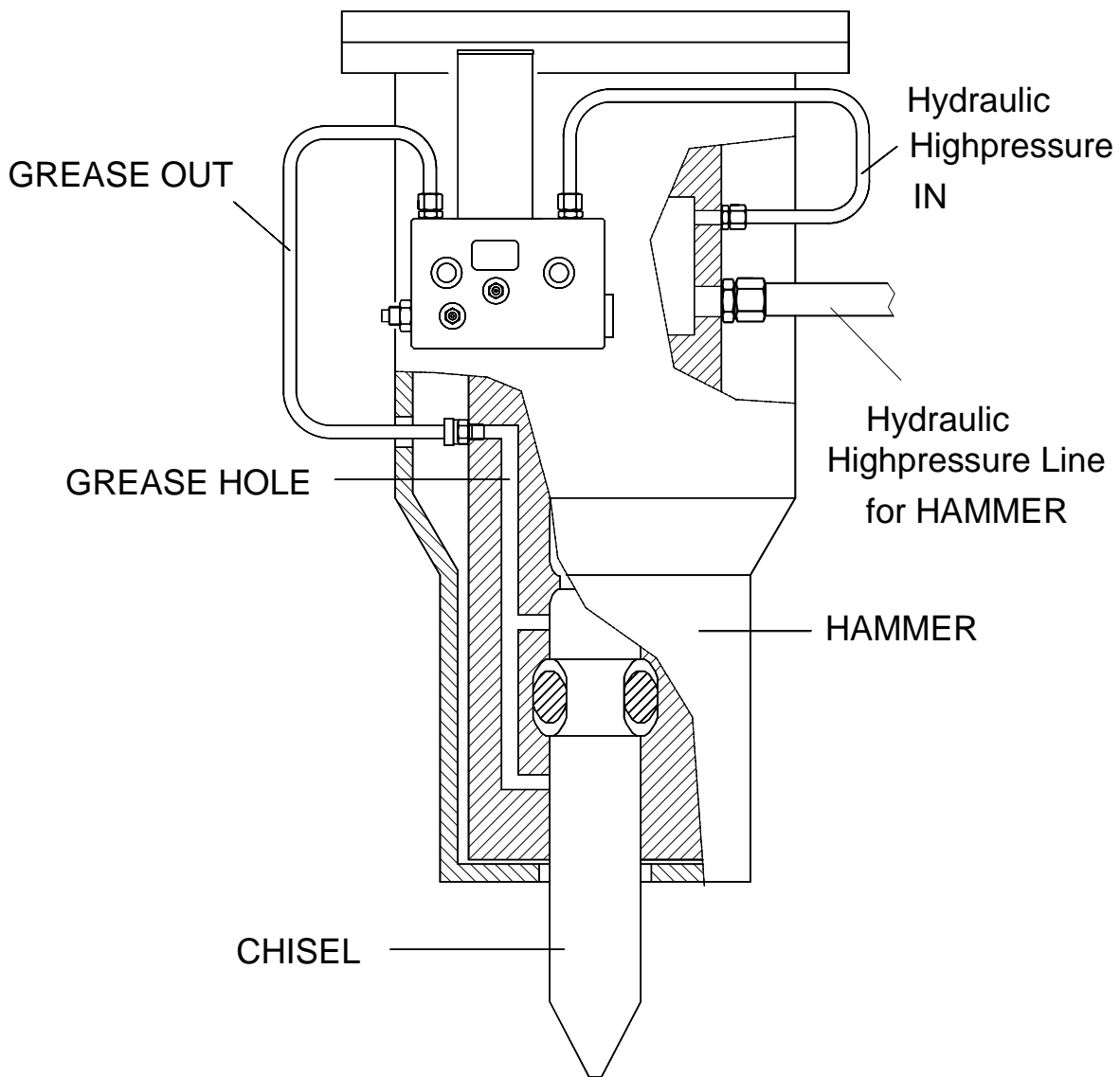
Part List

NO.	PART NO.	NAME	SIZE
1	H2-0100	BODY	
2	HNS14	Output Nipple	PF1/4"
3	HNS14	Output Nipple	PF1/4"
4	HNP01	PLUG	PF1"
5	HNG14	Nipple-Grease	PT1/4"
6	HL0810	ADJUSTER	Φ20 x 72
7	HL0820	LOCK-NUT	M16
8	HLOG30	O-Ring	G30
9	HLO2662	O-Ring	Ø 2.6-d62
10	HC-C400	Cartridge	Φ62 x 180



Installation

H2



The install bolts should be tightened by 20Kgf.m torque.
Must to be installed the bolt without washer.
Over torque and spring washer may cause serious damage
or malfunction

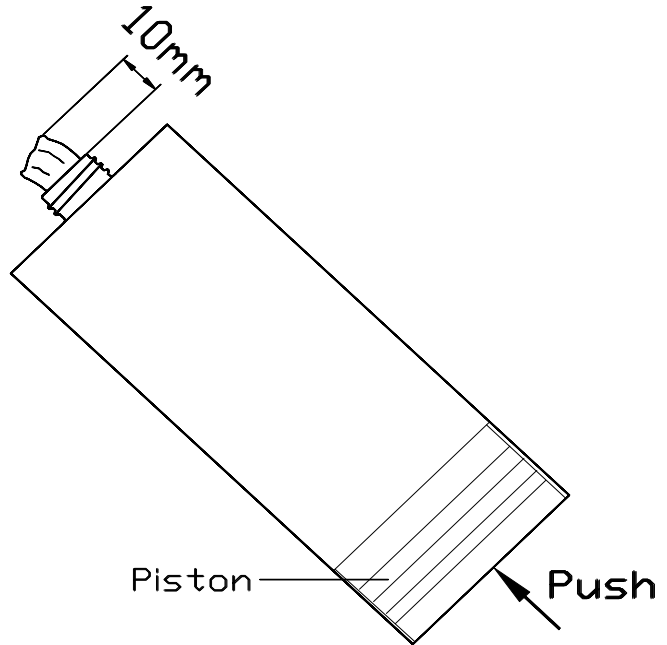


The Grease Cartridge should be tightened by one Hand only.
If the cartridge tightened by over torque, the screw may broken.

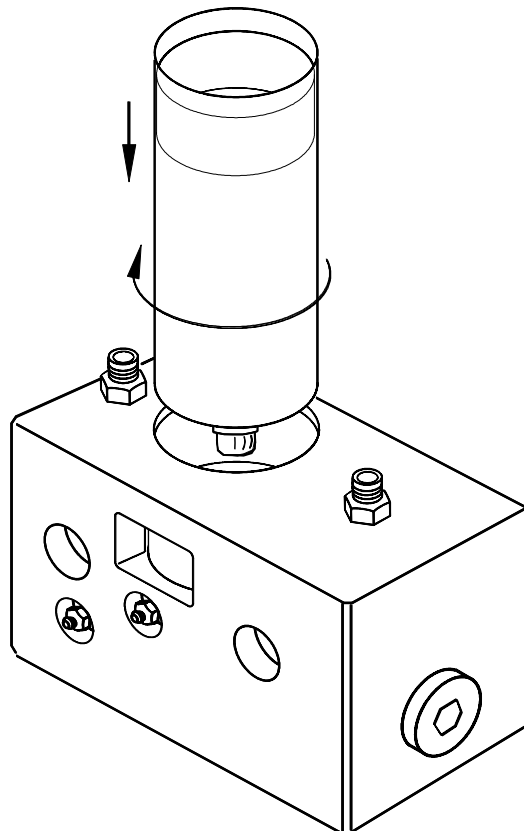
Cartridge Setting

1. Push the Cartridge Piston Cartridge spout Grease about 10mm

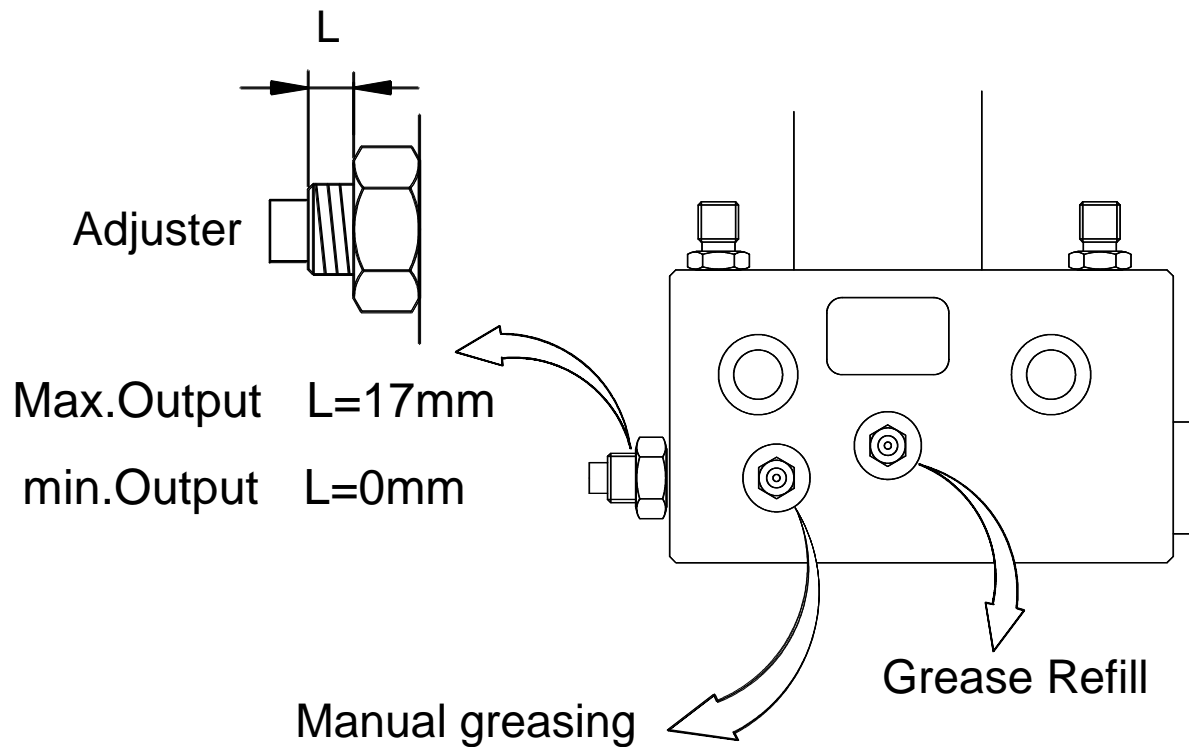
Very Important !



2. Insert the Cartridge & turn it for tightening



Adjustment & Manual Greasing



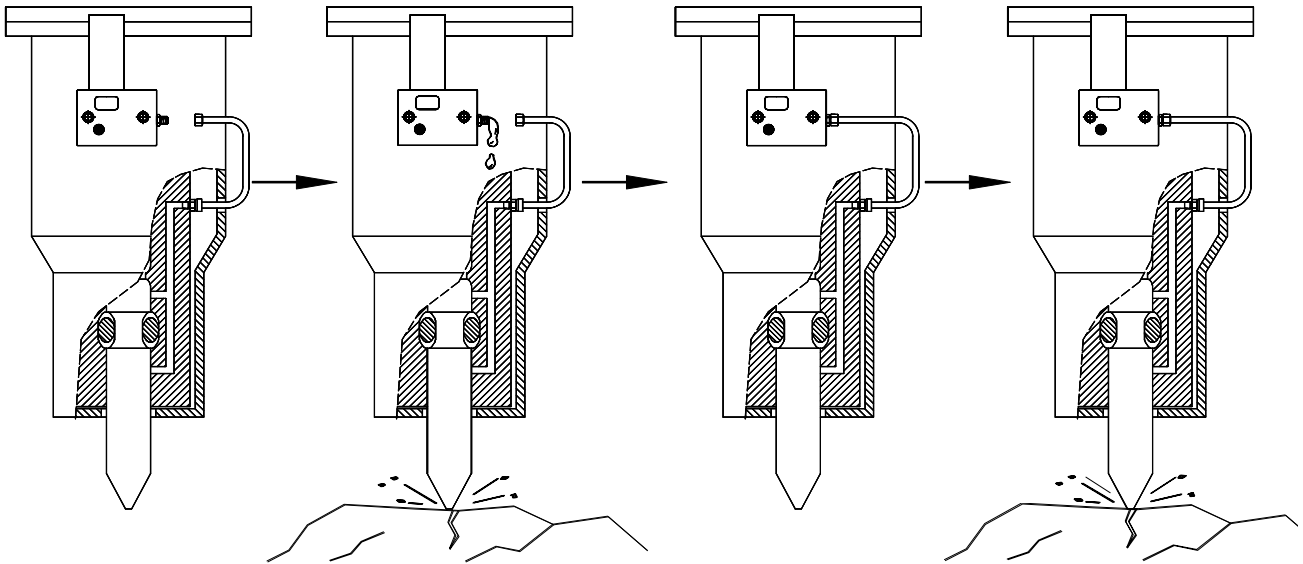
- Max. Output : 50cc~100cc / 1 hour
1 or 2 Cartridges / 1 day
- min. Output : 0cc~20cc / 1 hour
1 Cartridge / 3~5 days



If the Breaker has not been used more than 2 months, please supply enough grease manually by Grease nipple before operation

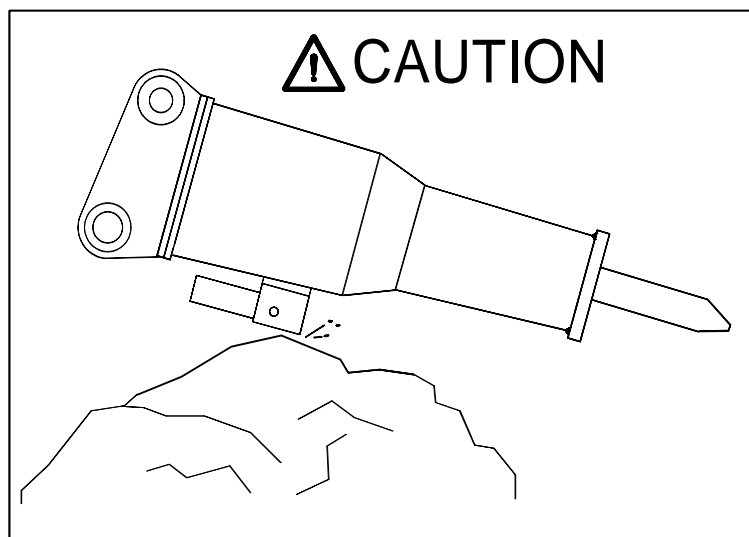
Operation

Checking the Pump before operation



1. Run the breaker without connecting the Grease hose
2. Check whether the grease flow for 3 minutes
3. Connect the Grease hose

Caution



The Grease Pump should not be contacted with rock or any other object
External or internal damages can cause malfunction